

NOTE: DRAWING  
5117039-ATK-ZZ-ZZ-DR-Y-2000 IS KEY PLAN

Stat	Purpose of Issue	Date	Auth	Rev	Description	By	Date	Chk'd	Auth
P	'WORK IN PROGRESS' ISSUE TO PPSG	14/05/14	TD	P1	'WORK IN PROGRESS' ISSUE TO PPSG	NP	14/05/14	JH	TD

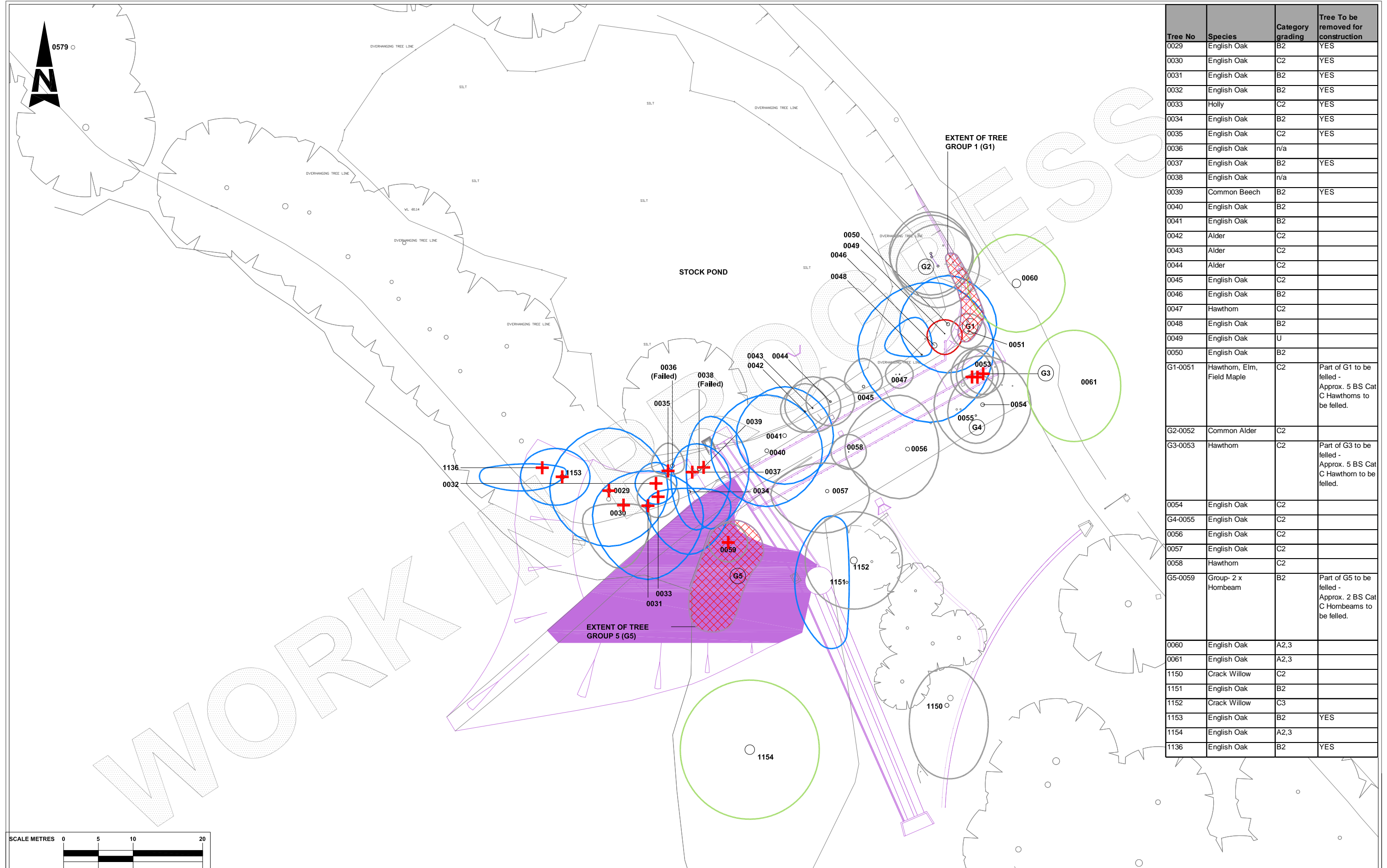
**ATKINS**<sup>™</sup>

**Atkins Limited**  
Landscape Architecture,  
The Octagon,  
27 Middleborough,  
Colchester, Essex, England  
CO1 1TG

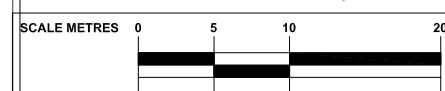
Tel: (01206) 732000  
Fax: (01206) 732020  
www.atkinsglobal.com

Client	City of London Corporation
Project	HAMPSTEAD HEATH PONDS PROJECT

Title				
HAMPSTEAD CHAIN AND HIGHGATE CHAIN TREE PROTECTION PLANS				
Sheet Size	Original Scale	Designed/Drawn	Checked	Authorised
<b>A1</b>	NTS	NP	JH	TD
Status	Drawing Number	Date	Date	Date
P	5117039-ATK-ZZ-ZZ-DR-Y-2000	07.05.14	07.05.14	07.05.14
				Rev
				P1



Tree No	Species	Category grading	Tree To be removed for construction
0029	English Oak	B2	YES
0030	English Oak	C2	YES
0031	English Oak	B2	YES
0032	English Oak	B2	YES
0033	Holly	C2	YES
0034	English Oak	B2	YES
0035	English Oak	C2	YES
0036	English Oak	n/a	
0037	English Oak	B2	YES
0038	English Oak	n/a	
0039	Common Beech	B2	YES
0040	English Oak	B2	
0041	English Oak	B2	
0042	Alder	C2	
0043	Alder	C2	
0044	Alder	C2	
0045	English Oak	C2	
0046	English Oak	B2	
0047	Hawthorn	C2	
0048	English Oak	B2	
0049	English Oak	U	
0050	English Oak	B2	
G1-0051	Hawthorn, Elm, Field Maple	C2	Part of G1 to be felled - Approx. 5 BS Cat C Hawthorns to be felled.
G2-0052	Common Alder	C2	
G3-0053	Hawthorn	C2	Part of G3 to be felled - Approx. 5 BS Cat C Hawthorn to be felled.
0054	English Oak	C2	
G4-0055	English Oak	C2	
0056	English Oak	C2	
0057	English Oak	C2	
0058	Hawthorn	C2	
G5-0059	Group- 2 x Hornbeam	B2	Part of G5 to be felled - Approx. 2 BS Cat C Hornbeams to be felled.
0060	English Oak	A2,3	
0061	English Oak	A2,3	
1150	Crack Willow	C2	
1151	English Oak	B2	
1152	Crack Willow	C3	
1153	English Oak	B2	YES
1154	English Oak	A2,3	
1136	English Oak	B2	YES



**TREE CONSTRAINTS KEY** \*category according to BS5837

- 000 (Green circle) \*CATEGORY A TREE + TREE REF.
- 000 (Blue circle) \*CATEGORY B TREE + TREE REF.
- 000 (Grey circle) \*CATEGORY C TREE + TREE REF.
- 000 (Red circle) \*CATEGORY U TREE + TREE REF.
- G1 (Blue circle) TREE GROUP REFERENCE
- W1 (Purple circle) WOODLAND GROUP + GROUP REFERENCE. HATCH EXTENT INDICATE APPROX EDGE OF CANOPIES OF PERIMETER TREES (COLOUR OF BOUNDARY LINE RELATES TO TREE \*CATEGORIES AS FOR INDIVIDUAL TREES AS SHOWN ABOVE)
- Circle with dot: ROOT PROTECTION AREA TO FOLLOW
- Red cross: TREE TO BE REMOVED OR TRANSLOCATED AS PART OF WORKS
- Red hatched area: WOODLAND GROUP TO BE REMOVED
- Purple hatched area: PROPOSED SCHEME

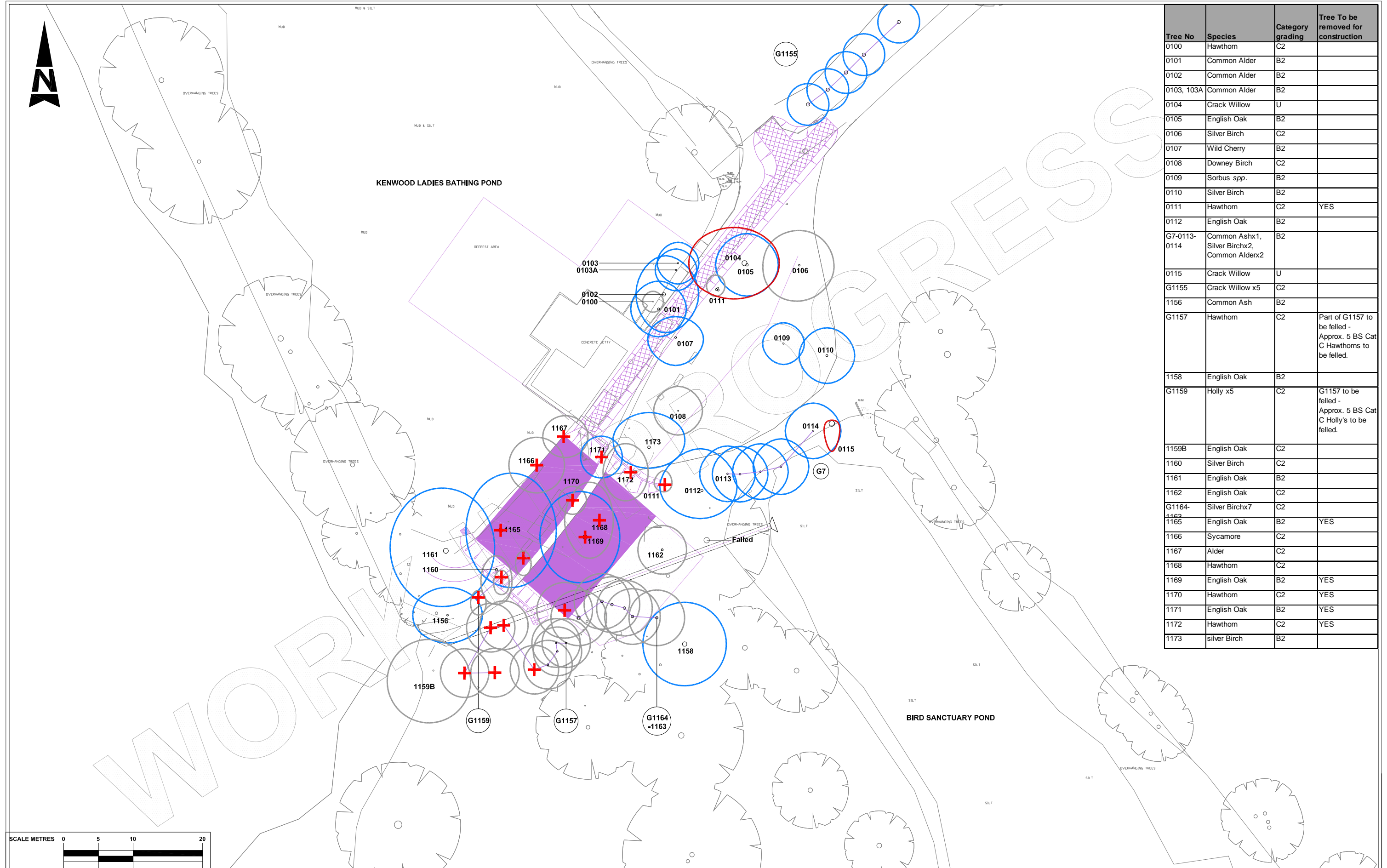
Stat	Purpose of Issue	Date	Auth	Rev	Description	By	Date	Chk'd	Auth
P	'WORK IN PROGRESS' ISSUE TO PPSG	14/05/14	TD	P1	'WORK IN PROGRESS' ISSUE TO PPSG	NP	14/05/14	JH	TD

**ATKINS™**  
**Atkins Limited**  
 Landscape Architecture,  
 The Octagon,  
 27 Middleborough,  
 Colchester, Essex, England  
 Tel: (01206) 732000  
 Fax: (01206) 732020  
 www.atkinglobal.com

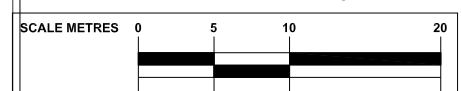
Client: City of London Corporation  
 Project: HAMPSTEAD HEATH PONDS PROJECT

Title: STOCK POND TREE PROTECTION PLANS

Sheet Size: A1	Original Scale: 1:250 @ A1, 1:500 @ A3	Designed/Drawn NP	Checked JH	Authorised TD
Status: P	Drawing Number: 5117039-ATK-P1-ZZ-DR-Y-2000	Date: 07.05.14	Date: 07.05.14	Date: 07.05.14
Rev: P1				



Tree No	Species	Category grading	Tree To be removed for construction
0100	Hawthorn	C2	
0101	Common Alder	B2	
0102	Common Alder	B2	
0103, 103A	Common Alder	B2	
0104	Crack Willow	U	
0105	English Oak	B2	
0106	Silver Birch	C2	
0107	Wild Cherry	B2	
0108	Downey Birch	C2	
0109	Sorbus spp.	B2	
0110	Silver Birch	B2	
0111	Hawthorn	C2	YES
0112	English Oak	B2	
G7-0113-0114	Common Ashx1, Silver Birchx2, Common Alderx2	B2	
0115	Crack Willow	U	
G1155	Crack Willow x5	C2	
1156	Common Ash	B2	
G1157	Hawthorn	C2	Part of G1157 to be felled - Approx. 5 BS Cat C Hawthorns to be felled.
1158	English Oak	B2	
G1159	Holly x5	C2	G1157 to be felled - Approx. 5 BS Cat C Holly's to be felled.
1159B	English Oak	C2	
1160	Silver Birch	C2	
1161	English Oak	B2	
1162	English Oak	C2	
G1164-1165	Silver Birchx7	C2	
1165	English Oak	B2	YES
1166	Sycamore	C2	
1167	Alder	C2	
1168	Hawthorn	C2	
1169	English Oak	B2	YES
1170	Hawthorn	C2	YES
1171	English Oak	B2	YES
1172	Hawthorn	C2	YES
1173	silver Birch	B2	



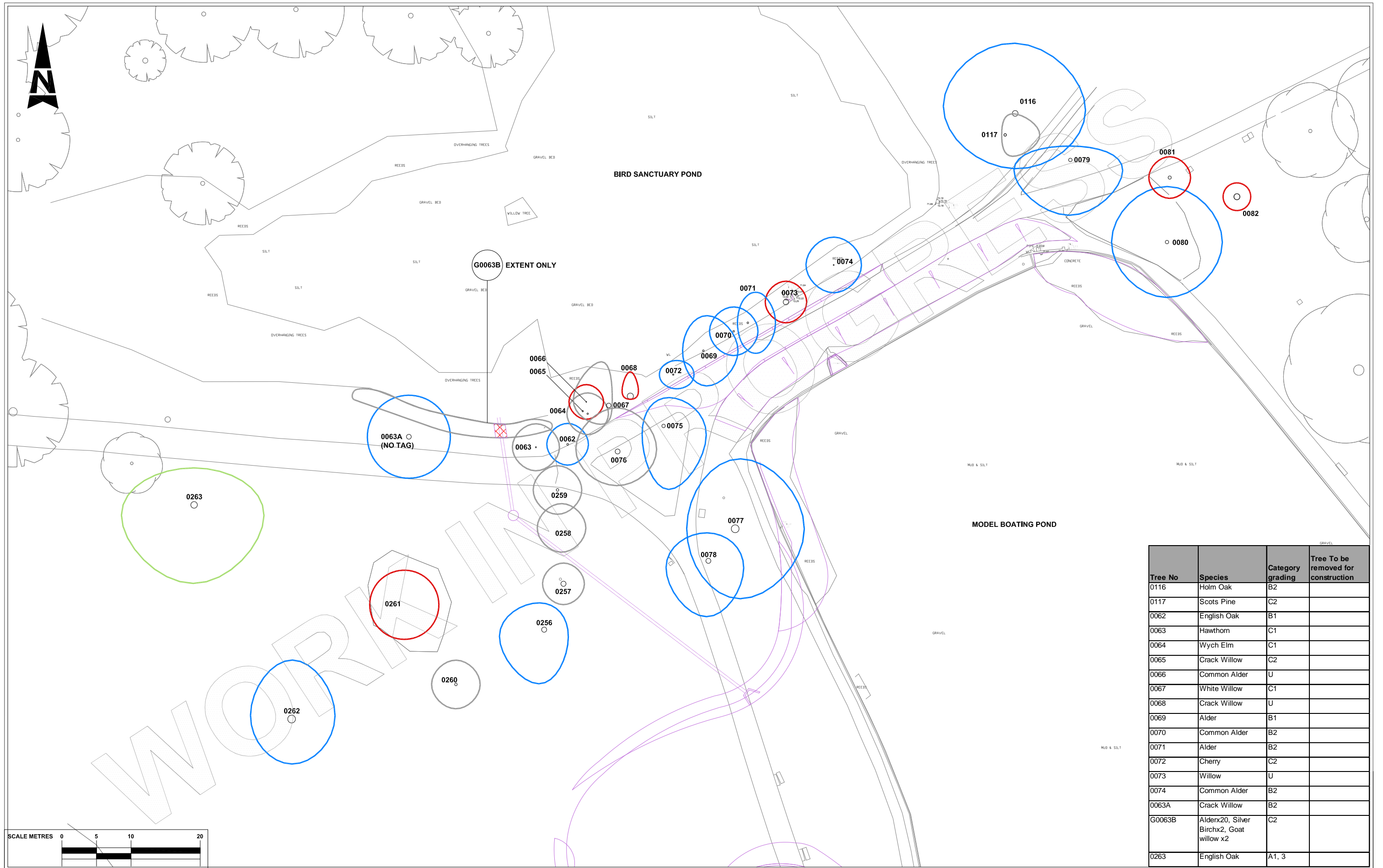
TREE CONSTRAINTS KEY		*category according to BS5837	
000	*CATEGORY A TREE + TREE REF.	G1	TREE GROUP REFERENCE
000	*CATEGORY B TREE + TREE REF.	W1	WOODLAND GROUP + GROUP REFERENCE
000	*CATEGORY C TREE + TREE REF.		HATCH EXTENT INDICATE APPROX EDGE OF CANOPIES OF PERIMETER TREES (COLOUR OF BOUNDARY LINE RELATES TO TREE *CATEGORIES AS FOR INDIVIDUAL TREES AS SHOWN ABOVE)
000	*CATEGORY U TREE + TREE REF.		
			ROOT PROTECTION AREA TO FOLLOW
			WOODLAND GROUP TO BE REMOVED
			PROPOSED SCHEME
			TREE TO BE REMOVED OR TRANSLOCATED AS PART OF WORKS

Stat	Purpose of Issue	Date	Auth	Rev	Description	By	Date	Chk'd	Auth
P	'WORK IN PROGRESS' ISSUE TO PPSG	15/05/14	TD	P1	'WORK IN PROGRESS' ISSUE TO PPSG	NP	14/05/14	JH	TD

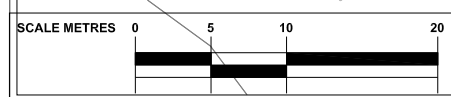
**ATKINS**  
 Atkins Limited  
 Landscape Architecture,  
 The Octagon,  
 27 Middleborough,  
 Colchester, Essex, England  
 Tel: (01206) 732000  
 Fax: (01206) 732020  
 www.atkinsglobal.com

Client	City of London Corporation
Project	HAMPSTEAD HEATH PONDS PROJECT

Title		KENWOOD LADIE'S BATHING POND TREE PROTECTION PLANS			
Sheet Size	Original Scale	Designed/Drawn	Checked	Authorised	
A1	1:250@A1 1:500@A3	NP	JH	TD	
Status	Drawing Number	Date	Date	Date	Rev
P	5117039-ATK-P2-ZZ-DR-Y-2000	07.05.14	07.05.14	07.05.14	P1



Tree No	Species	Category grading	Tree To be removed for construction
0116	Holm Oak	B2	
0117	Scots Pine	C2	
0062	English Oak	B1	
0063	Hawthorn	C1	
0064	Wych Elm	C1	
0065	Crack Willow	C2	
0066	Common Alder	U	
0067	White Willow	C1	
0068	Crack Willow	U	
0069	Alder	B1	
0070	Common Alder	B2	
0071	Alder	B2	
0072	Cherry	C2	
0073	Willow	U	
0074	Common Alder	B2	
0063A	Crack Willow	B2	
G0063B	Alderx20, Silver Birchx2, Goat willow x2	C2	
0263	English Oak	A1, 3	



**TREE CONSTRAINTS KEY** \*category according to BS5837

- 000 (Green circle) \*CATEGORY A TREE + TREE REF.
- 000 (Blue circle) \*CATEGORY B TREE + TREE REF.
- 000 (Grey circle) \*CATEGORY C TREE + TREE REF.
- 000 (Red circle) \*CATEGORY U TREE + TREE REF.
- G1 (Green circle with 'G1') TREE GROUP REFERENCE
- W1 (White circle with 'W1') WOODLAND GROUP + GROUP REFERENCE. HATCH EXTENT INDICATE APPROX EDGE OF CANOPIES OF PERIMETER TREES (COLOUR OF BOUNDARY LINE RELATES TO TREE \*CATEGORIES AS FOR INDIVIDUAL TREES AS SHOWN ABOVE)
- Circle with dot ROOT PROTECTION AREA TO FOLLOW
- Red cross-hatch WOODLAND GROUP TO BE REMOVED
- Purple hatched area PROPOSED SCHEME
- Red cross (+) TREE TO BE REMOVED OR TRANSLOCATED AS PART OF WORKS

Stat	Purpose of Issue	Date	Auth	Rev	Description	By	Date	Chk'd	Auth
P	'WORK IN PROGRESS' ISSUE TO PPSG	14/05/14	TD	P1	'WORK IN PROGRESS' ISSUE TO PPSG	NP	TBC	JH	TD

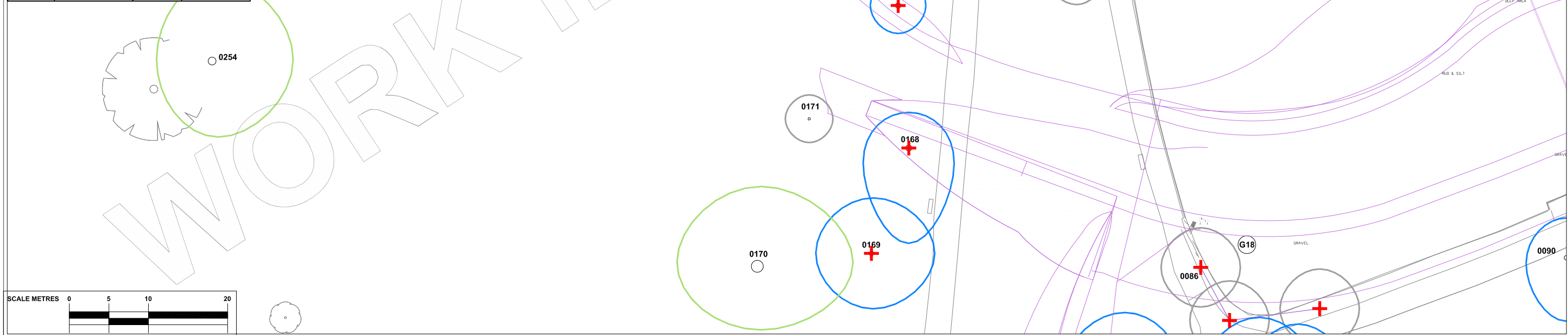
**ATKINS™**  
**Atkins Limited**  
 Landscape Architecture,  
 The Octagon,  
 27 Middleborough,  
 Colchester, Essex, England  
 Tel: (01206) 732000  
 Fax: (01206) 732020  
 www.atkinglobal.com

Client: City of London Corporation  
 Project: HAMPSTEAD HEATH PONDS PROJECT

Title: BIRD SANCTUARY POND TREE PROTECTION PLANS

Sheet Size: A1	Original Scale: 1:250@A1, 1:500@A3	Designed/Drawn: NP	Checked: JH	Authorised: TD
Status: P	Drawing Number: 5117039-ATK-P3-ZZ-DR-Y-2000	Date: 07.05.14	Date: 07.05.14	Date: 07.05.14
Rev: P1				

Tree No	Species	Category grading	Tree To be removed for construction
0075	English Oak	B1	
0076	London Plane	C1	
0077	London Plane	B1	
0078	English Oak	B1	
0079	Crack Willow	B1	
0080	Crack Willow	B1	
0081	Sycamore	U	
0082	Common Ash	U	
0256	London Plane	B1	
0257	Lombardy poplar	C1	
0259, 0258	Alder	C1	
0260	White Willow	C1	
0261	Failed tree	U	
0262	Turkey Oak	B1, 3	
0165	English Oak	C2	YES
G17-0166	Lime, 1xFalse Acacia	A2, C1-Robinia	
0167	Sycamore	B2	YES
0168	Weeping Willow	B2	YES
0169	Weeping Willow	B2	YES
0170	English Oak	A2, 3	
0171	Hawthorn, English Oak	C2	
0172	London Plane	B2	
0173	English Oak	B1	
0174	Standard dead tree	C3	
0254	Copper Beech	A1	
0083	Hornbeam	B1	YES
0084	Grey Poplar	C1	YES
0085	Hornbeam	B1 (dependent on further inspection)	
G18-0086	Hornbeamx3	C2	YES
0087	London Plane	B1	
0088	Common Ash	C1	YES
0163	Hybrid Black Poplar	B2	
0164	Weeping Willow	B2	



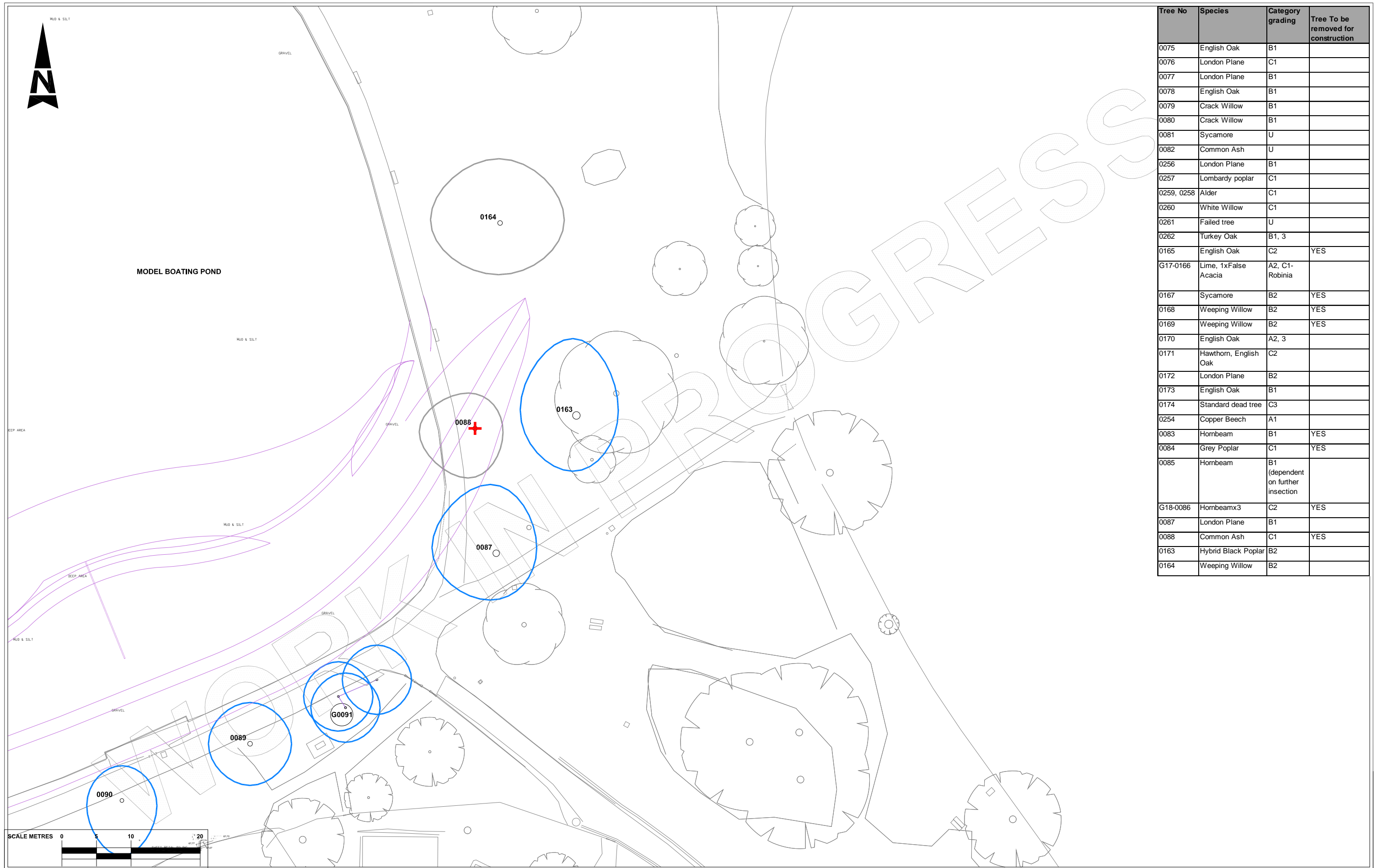
TREE CONSTRAINTS KEY		*category according to BS5837	
000	*CATEGORY A TREE + TREE REF.	G1	TREE GROUP REFERENCE
000	*CATEGORY B TREE + TREE REF.	W1	WOODLAND GROUP + GROUP REFERENCE
000	*CATEGORY C TREE + TREE REF.		HATCH EXTENT INDICATE APPROX EDGE OF CANOPIES OF PERIMETER TREES (COLOUR OF BOUNDARY LINE RELATES TO TREE *CATEGORIES AS FOR INDIVIDUAL TREES AS SHOWN ABOVE)
000	*CATEGORY U TREE + TREE REF.		
			ROOT PROTECTION AREA TO FOLLOW
			WOODLAND GROUP TO BE REMOVED
			PROPOSED SCHEME
			TREE TO BE REMOVED OR TRANSLOCATED AS PART OF WORKS

Stat	Purpose of Issue	Date	Auth	Rev	Description	By	Date	Chk'd	Auth
P	'WORK IN PROGRESS' ISSUE TO PPSG	14/05/14	TD	P1	'WORK IN PROGRESS' ISSUE TO PPSG	NP	14/05/14	JH	TD

**ATKINS™**  
**Atkins Limited**  
 Landscape Architecture,  
 The Octagon,  
 27 Middleborough,  
 Colchester, Essex, England  
 CO1 1TG  
 Tel: (01206) 732000  
 Fax: (01206) 732020  
 www.atkinglobal.com

Client	City of London Corporation
Project	HAMPSTEAD HEATH PONDS PROJECT

Title		MODEL BOATING POND TREE PROTECTION PLANS			
Sheet Size	Original Scale	Designed/Drawn	Checked	Authorised	
A1	1:250@A1 1:500@A3	NP	JH	TD	
Status	Drawing Number	Date	Date	Date	Rev
P	5117039-ATK-P4-ZZ-DR-Y-2000	07.05.14	07.05.14	07.05.14	P1



Tree No	Species	Category grading	Tree To be removed for construction
0075	English Oak	B1	
0076	London Plane	C1	
0077	London Plane	B1	
0078	English Oak	B1	
0079	Crack Willow	B1	
0080	Crack Willow	B1	
0081	Sycamore	U	
0082	Common Ash	U	
0256	London Plane	B1	
0257	Lombardy poplar	C1	
0259, 0258	Alder	C1	
0260	White Willow	C1	
0261	Failed tree	U	
0262	Turkey Oak	B1, 3	
0165	English Oak	C2	YES
G17-0166	Lime, 1xFalse Acacia	A2, C1-Robinia	
0167	Sycamore	B2	YES
0168	Weeping Willow	B2	YES
0169	Weeping Willow	B2	YES
0170	English Oak	A2, 3	
0171	Hawthorn, English Oak	C2	
0172	London Plane	B2	
0173	English Oak	B1	
0174	Standard dead tree	C3	
0254	Copper Beech	A1	
0083	Hornbeam	B1	YES
0084	Grey Poplar	C1	YES
0085	Hornbeam	B1 (dependent on further inspection)	
G18-0086	Hornbeamx3	C2	YES
0087	London Plane	B1	
0088	Common Ash	C1	YES
0163	Hybrid Black Poplar	B2	
0164	Weeping Willow	B2	

**TREE CONSTRAINTS KEY** \*category according to BS5837

- 000 (Green circle) \*CATEGORY A TREE + TREE REF.
- 000 (Blue circle) \*CATEGORY B TREE + TREE REF.
- 000 (Grey circle) \*CATEGORY C TREE + TREE REF.
- 000 (Red circle) \*CATEGORY U TREE + TREE REF.
- G1 (Green circle) TREE GROUP REFERENCE
- W1 (White circle) WOODLAND GROUP + GROUP REFERENCE. HATCH EXTENT INDICATE APPROX EDGE OF CANOPIES OF PERIMETER TREES (COLOUR OF BOUNDARY LINE RELATES TO TREE \*CATEGORIES AS FOR INDIVIDUAL TREES AS SHOWN ABOVE)
- Circle with dot ROOT PROTECTION AREA TO FOLLOW
- Red hatched box WOODLAND GROUP TO BE REMOVED
- Purple hatched box PROPOSED SCHEME
- Red cross TREE TO BE REMOVED OR TRANSLOCATED AS PART OF WORKS

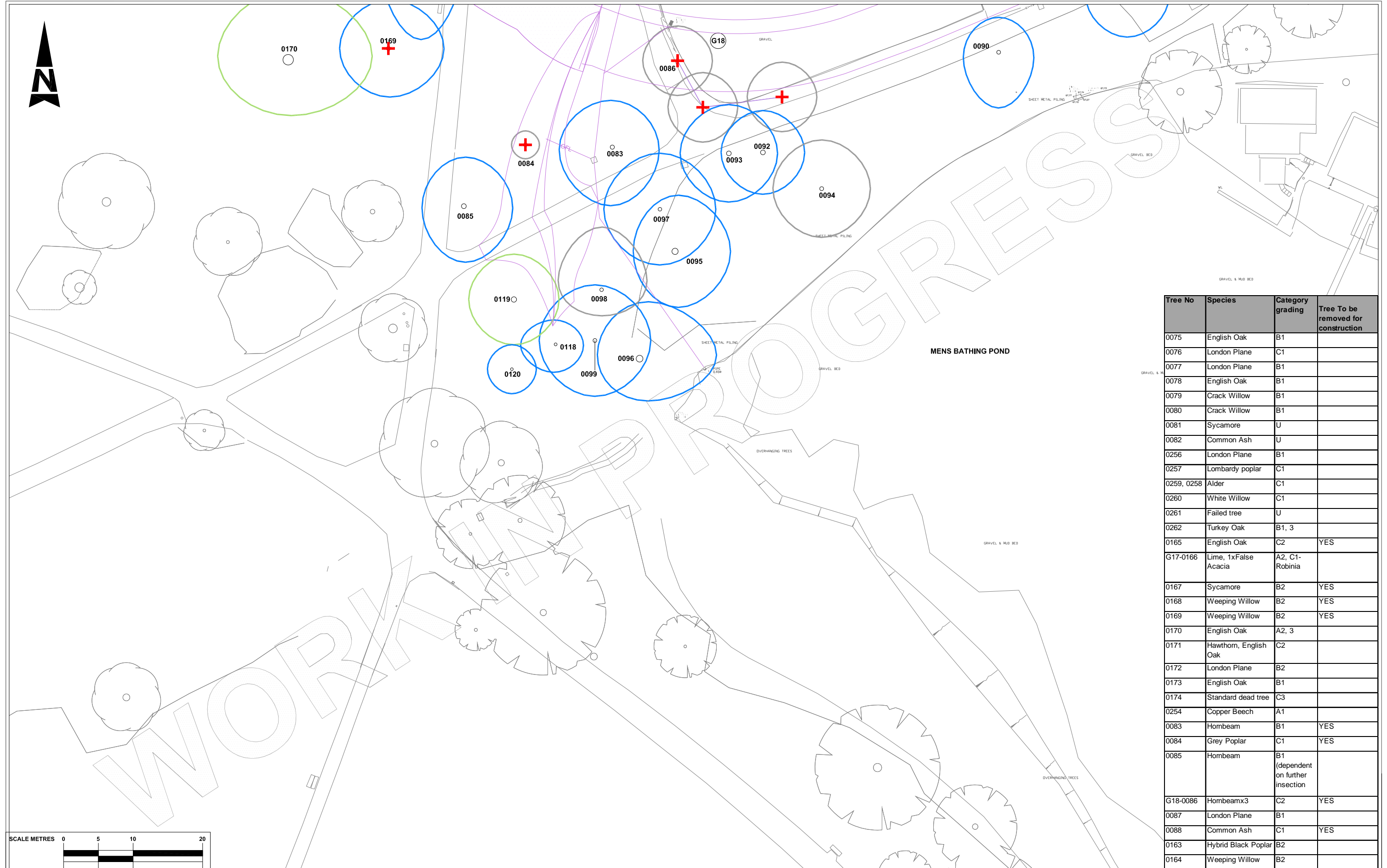
Stat	Purpose of Issue	Date	Auth	Rev	Description	By	Date	Chk'd	Auth
P	'WORK IN PROGRESS' ISSUE TO PPSG	14/05/14	TD	P1	'WORK IN PROGRESS' ISSUE TO PPSG	NP	14/05/14	JH	TD

**ATKINS**  
 Atkins Limited  
 Landscape Architecture,  
 The Octagon,  
 27 Middleborough,  
 Colchester, Essex, England  
 Tel: (01206) 732000  
 Fax: (01206) 732020  
 www.atkinglobal.com

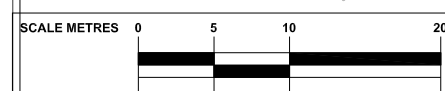
Client  
 Project  
**HAMPSTEAD HEATH  
 FLOOD AND WATER QUALITY  
 MANAGEMENT**

Title  
**MODEL BOATING POND  
 TREE PROTECTION PLANS**

Sheet Size <b>A1</b>	Original Scale 1:250@A1 1:500@A3	Designed/Drawn NP	Checked JH	Authorised TD
Status P	Drawing Number 5117039-ATK-P4-ZZ-DR-Y-2001	Date 07.05.14	Date 07.05.14	Date 07.05.14
Rev P1				



Tree No	Species	Category grading	Tree To be removed for construction
0075	English Oak	B1	
0076	London Plane	C1	
0077	London Plane	B1	
0078	English Oak	B1	
0079	Crack Willow	B1	
0080	Crack Willow	B1	
0081	Sycamore	U	
0082	Common Ash	U	
0256	London Plane	B1	
0257	Lombardy poplar	C1	
0259, 0258	Alder	C1	
0260	White Willow	C1	
0261	Failed tree	U	
0262	Turkey Oak	B1, 3	
0165	English Oak	C2	YES
G17-0166	Lime, 1xFalse Acacia	A2, C1-Robinia	
0167	Sycamore	B2	YES
0168	Weeping Willow	B2	YES
0169	Weeping Willow	B2	YES
0170	English Oak	A2, 3	
0171	Hawthorn, English Oak	C2	
0172	London Plane	B2	
0173	English Oak	B1	
0174	Standard dead tree	C3	
0254	Copper Beech	A1	
0083	Hornbeam	B1	YES
0084	Grey Poplar	C1	YES
0085	Hornbeam	B1 (dependent on further insection)	
G18-0086	Hornbeamx3	C2	YES
0087	London Plane	B1	
0088	Common Ash	C1	YES
0163	Hybrid Black Poplar	B2	
0164	Weeping Willow	B2	



**TREE CONSTRAINTS KEY** \*category according to BS5837

- 000 \*CATEGORY A TREE + TREE REF.
- 000 \*CATEGORY B TREE + TREE REF.
- 000 \*CATEGORY C TREE + TREE REF.
- 000 \*CATEGORY U TREE + TREE REF.

TREE GROUP REFERENCE  
 WOODLAND GROUP + GROUP REFERENCE  
 PROPOSED SCHEME  
 ROOT PROTECTION AREA TO FOLLOW  
 WOODLAND GROUP TO BE REMOVED  
 TREE TO BE REMOVED OR TRANSLATED AS PART OF WORKS

HATCH EXTENT INDICATE APPROX EDGE OF CANOPIES OF PERIMETER TREES (COLOUR OF BOUNDARY LINE RELATES TO TREE \*CATEGORIES AS FOR INDIVIDUAL TREES AS SHOWN ABOVE)

Stat	Purpose of Issue	Date	Auth	Rev	Description	By	Date	Chk'd	Auth
P	'WORK IN PROGRESS' ISSUE TO PPSG	14/05/14	TD	P1	'WORK IN PROGRESS' ISSUE TO PPSG	NP	14/05/14	JH	TD

**ATKINS**<sup>TM</sup>

**Atkins Limited**  
 Landscape Architecture,  
 The Octagon,  
 27 Middleborough,  
 Colchester, Essex, England  
 C01 1TG

Tel: (01206) 732000  
 Fax: (01206) 732020  
 www.atkinglobal.com

Client  
 City of London Corporation

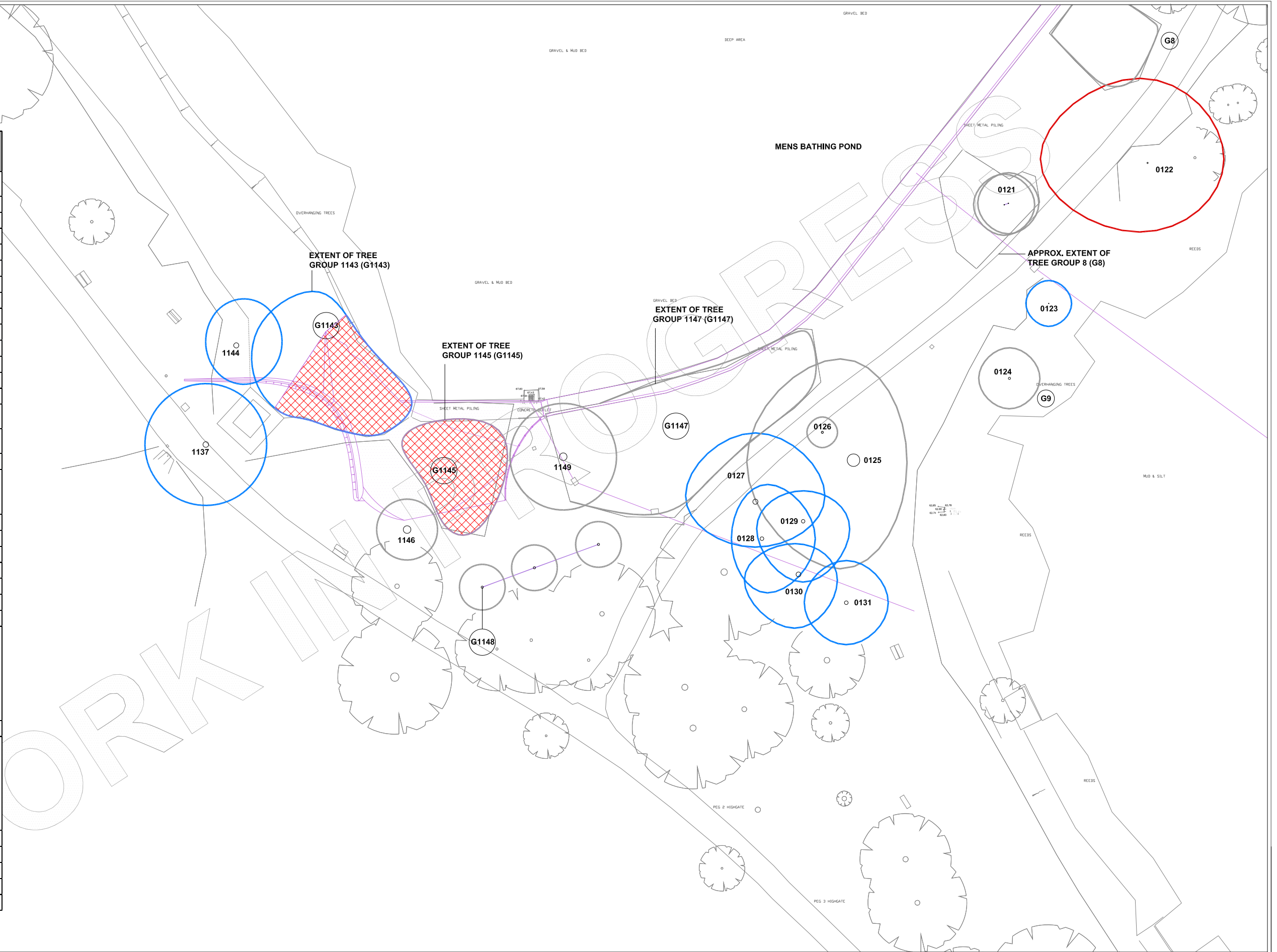
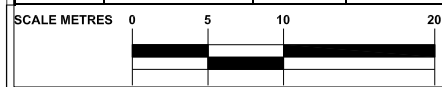
Project  
 HAMPSTEAD HEATH PONDS PROJECT

Title  
 MODEL BOATING POND  
 TREE PROTECTION PLANS

Sheet Size <b>A1</b>	Original Scale 1:250@A1 1:500@A3	Designed/Drawn NP	Checked JH	Authorised TD
Status P	Drawing Number 5117039-ATK-P4-ZZ-DR-Y-2002	Date 07.05.14	Date 07.05.14	Date 07.05.14
Rev P1				



Tree No	Species	Category grading	Tree To be removed for construction
G0091	Sycamore, Common Ash	B2	
0089	Sycamore	B1	
0090	English Oak	B1	
0092	Hornbeam	B2	
0093	Hornbeam	B1	
0094	Hornbeam	C2	
0095	Hornbeam	B1	
0096	English Oak	B1	
0097	Hornbeam	B2	
0098	Hornbeam	C1	
0099	Hornbeam	B2	
0118	Hornbeam	B2	
0119	Hornbeam	A2	
0120	Alder	B2	
G8-0121	Blackthorn, Hawthorn	C2	
0122	Black hybrid poplar	U	
0123	Elm	B1	
G9-0124	Hybrid Black poplar, Hawthorn, Common Ash, Apple, Elm	C2	
0125	Hybrid Black Poplar	C2	
0126	Hawthorn	C2	
0127	Hornbeam	B2	
0128	Hornbeam	B2	
0129	Hornbeam	B2	
0130	Hornbeam	B2	
0131	Lime	B2	
G1143	Ash, Hawthorn, Blackthorn	C2	Part of G1143 to be felled - Approx. 5 BS Cat C trees to be felled, mix of Hawthorn, Blackthorn and Ash.
1144	Common Ash	C2	
G1145	Hawthorn, Cherry, Blackthorn	C2	Part of G1145 to be felled - Approx. 10 BS Cat C trees to be felled, mix of Hawthorn, Blackthorn and Cherry.
1146	Crack Willow	C3	
G1147	Cherry, Blackthorn	C2	
G1148	Willow x5	C2	
1149	Crack Willow	C1	
1137	English Oak	B1	



**TREE CONSTRAINTS KEY** \*category according to BS5837

- 000 \*CATEGORY A TREE + TREE REF.
- 000 \*CATEGORY B TREE + TREE REF.
- 000 \*CATEGORY C TREE + TREE REF.
- 000 \*CATEGORY U TREE + TREE REF.

TREE GROUP REFERENCE  
 WOODLAND GROUP + GROUP REFERENCE  
 HATCH EXTENT INDICATE APPROX EDGE OF CANOPIES OF PERIMETER TREES (COLOUR OF BOUNDARY LINE RELATES TO TREE \*CATEGORIES AS FOR INDIVIDUAL TREES AS SHOWN ABOVE)

- ROOT PROTECTION AREA TO FOLLOW
- WOODLAND GROUP TO BE REMOVED
- PROPOSED SCHEME
- TREE TO BE REMOVED OR TRANSLOCATED AS PART OF WORKS

Stat	Purpose of Issue	Date	Auth	Rev	Description	By	Date	Chk'd	Auth
P	'WORK IN PROGRESS' ISSUE TO PPSG	14/05/14	TD	P1	'WORK IN PROGRESS' ISSUE TO PPSG	NP	14/05/14	JH	TD

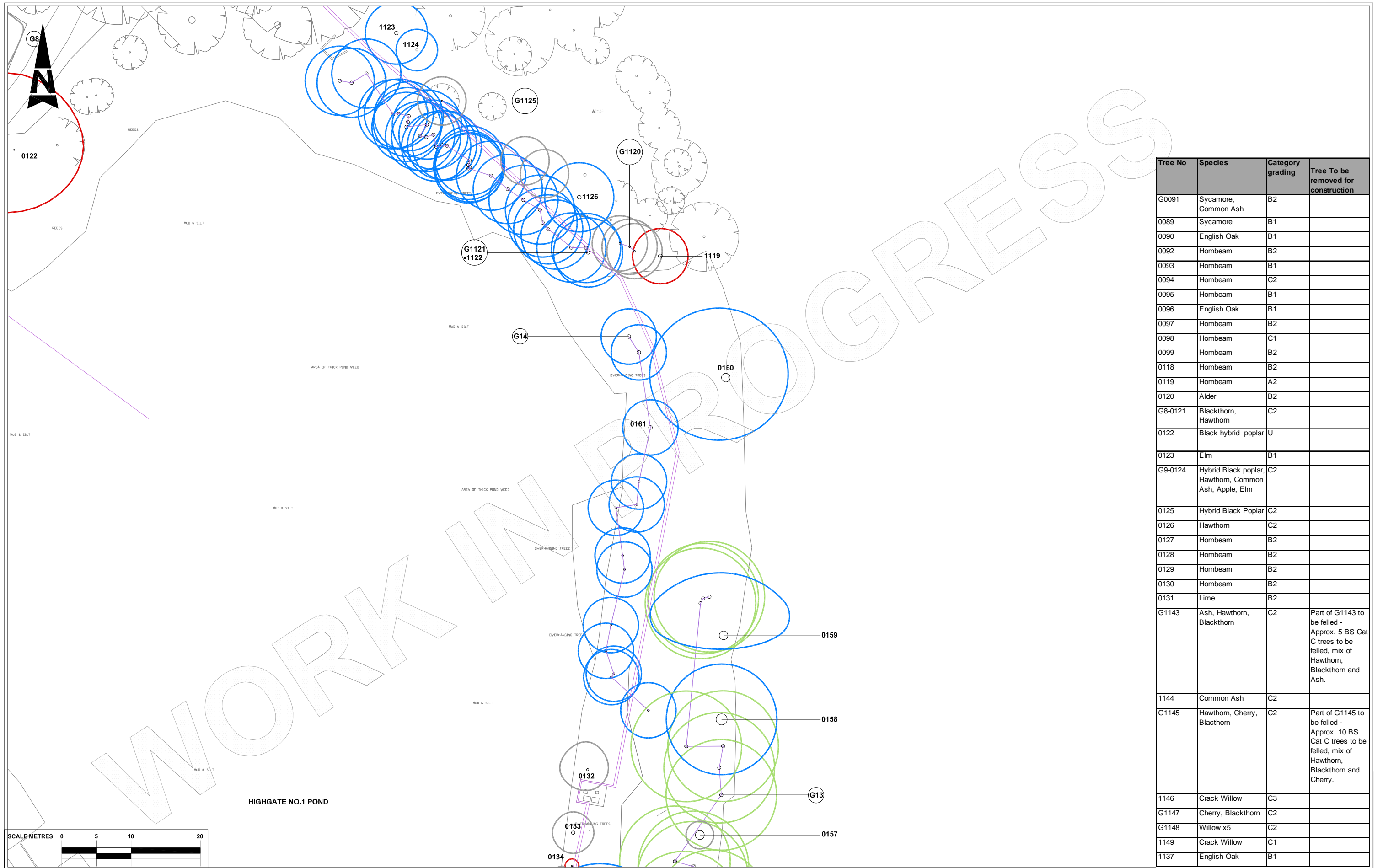
**ATKINS**<sup>TM</sup>

**Atkins Limited**  
 Landscape Architecture,  
 The Octagon,  
 27 Middleborough,  
 Colchester, Essex, England  
 Tel: (01206) 732000  
 Fax: (01206) 732020  
 www.atkinglobal.com

Client	City of London Corporation
Project	HAMPSTEAD HEATH PONDS PROJECT

Title		HIGHGATE MENS' BATHING POND TREE PROTECTION PLANS			
Sheet Size	Original Scale	Designed/Drawn	Checked	Authorised	
A1	1:250@A1 1:500@A3	NP	JH	TD	
Status	Drawing Number	Date	Date	Date	Rev
P	5117039-ATK-P5-ZZ-DR-Y-2000	07.05.14	07.05.14	07.05.14	P1





Tree No	Species	Category grading	Tree To be removed for construction
G0091	Sycamore, Common Ash	B2	
0089	Sycamore	B1	
0090	English Oak	B1	
0092	Hornbeam	B2	
0093	Hornbeam	B1	
0094	Hornbeam	C2	
0095	Hornbeam	B1	
0096	English Oak	B1	
0097	Hornbeam	B2	
0098	Hornbeam	C1	
0099	Hornbeam	B2	
0118	Hornbeam	B2	
0119	Hornbeam	A2	
0120	Alder	B2	
G8-0121	Blackthorn, Hawthorn	C2	
0122	Black hybrid poplar	U	
0123	Elm	B1	
G9-0124	Hybrid Black poplar, Hawthorn, Common Ash, Apple, Elm	C2	
0125	Hybrid Black Poplar	C2	
0126	Hawthorn	C2	
0127	Hornbeam	B2	
0128	Hornbeam	B2	
0129	Hornbeam	B2	
0130	Hornbeam	B2	
0131	Lime	B2	
G1143	Ash, Hawthorn, Blackthorn	C2	Part of G1143 to be felled - Approx. 5 BS Cat C trees to be felled, mix of Hawthorn, Blackthorn and Ash.
1144	Common Ash	C2	
G1145	Hawthorn, Cherry, Blackthorn	C2	Part of G1145 to be felled - Approx. 10 BS Cat C trees to be felled, mix of Hawthorn, Blackthorn and Cherry.
1146	Crack Willow	C3	
G1147	Cherry, Blackthorn	C2	
G1148	Willow x5	C2	
1149	Crack Willow	C1	
1137	English Oak	B1	

**TREE CONSTRAINTS KEY** \*category according to BS5837

- 000 (Green circle) \*CATEGORY A TREE + TREE REF.
- 000 (Blue circle) \*CATEGORY B TREE + TREE REF.
- 000 (Grey circle) \*CATEGORY C TREE + TREE REF.
- 000 (Red circle) \*CATEGORY U TREE + TREE REF.

(G1) TREE GROUP REFERENCE  
 (W1) WOODLAND GROUP + GROUP REFERENCE. HATCH EXTENT INDICATE APPROX EDGE OF CANOPIES OF PERIMETER TREES (COLOUR OF BOUNDARY LINE RELATES TO TREE \*CATEGORIES AS FOR INDIVIDUAL TREES AS SHOWN ABOVE)

(Circle with dot) ROOT PROTECTION AREA TO FOLLOW  
 (Red cross-hatch) WOODLAND GROUP TO BE REMOVED  
 (Purple cross-hatch) PROPOSED SCHEME  
 (+) TREE TO BE REMOVED OR TRANSLOCATED AS PART OF WORKS

Stat	Purpose of Issue	Date	Auth	Rev	Description	By	Date	Chk'd	Auth
P	'WORK IN PROGRESS' ISSUE TO PPSG	14/05/14	TD	A	'WORK IN PROGRESS' ISSUE TO PPSG	NP	14/05/14	JH	TD

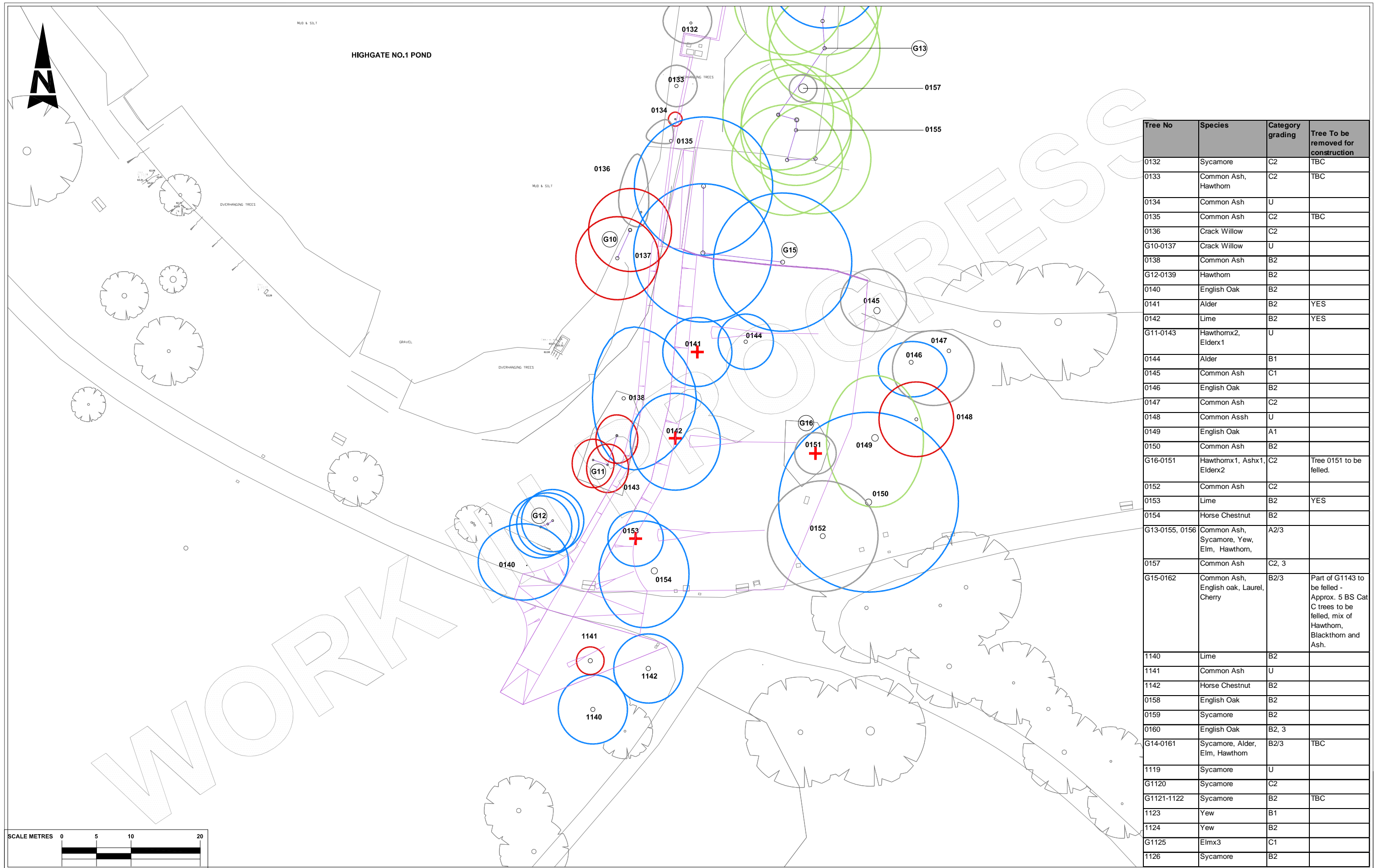
**ATKINS**  
 Atkins Limited  
 Landscape Architecture,  
 The Octagon,  
 27 Middleborough,  
 Colchester, Essex, England  
 Tel: (01206) 732000  
 Fax: (01206) 732020  
 www.atkinglobal.com

Client: City of London Corporation

Project: HAMPSTEAD HEATH PONDS PROJECT

Title: HIGHGATE MENS' BATHING POND TREE PROTECTION PLANS

Sheet Size: A1	Original Scale: 1:250@A1, 1:500@A3	Designed/Drawn: NP	Checked: JH	Authorised: TD
Status: P	Drawing Number: 5117039-ATK-P5-ZZ-DR-Y-2001	Date: 07.05.14	Date: 07.05.14	Date: 07.05.14
Rev: P1				



Tree No	Species	Category grading	Tree To be removed for construction
0132	Sycamore	C2	TBC
0133	Common Ash, Hawthorn	C2	TBC
0134	Common Ash	U	
0135	Common Ash	C2	TBC
0136	Crack Willow	C2	
G10-0137	Crack Willow	U	
0138	Common Ash	B2	
G12-0139	Hawthorn	B2	
0140	English Oak	B2	
0141	Alder	B2	YES
0142	Lime	B2	YES
G11-0143	Hawthornx2, Elderox1	U	
0144	Alder	B1	
0145	Common Ash	C1	
0146	English Oak	B2	
0147	Common Ash	C2	
0148	Common Assh	U	
0149	English Oak	A1	
0150	Common Ash	B2	
G16-0151	Hawthornx1, Ashx1, Elderox2	C2	Tree 0151 to be felled.
0152	Common Ash	C2	
0153	Lime	B2	YES
0154	Horse Chestnut	B2	
G13-0155, 0156	Common Ash, Sycamore, Yew, Elm, Hawthorn,	A2/3	
0157	Common Ash	C2, 3	
G15-0162	Common Ash, English oak, Laurel, Cherry	B2/3	Part of G1143 to be felled - Approx. 5 BS Cat C trees to be felled, mix of Hawthorn, Blackthorn and Ash.
1140	Lime	B2	
1141	Common Ash	U	
1142	Horse Chestnut	B2	
0158	English Oak	B2	
0159	Sycamore	B2	
0160	English Oak	B2, 3	
G14-0161	Sycamore, Alder, Elm, Hawthorn	B2/3	TBC
1119	Sycamore	U	
G1120	Sycamore	C2	
G1121-1122	Sycamore	B2	TBC
1123	Yew	B1	
1124	Yew	B2	
G1125	Elmx3	C1	
1126	Sycamore	B2	

**TREE CONSTRAINTS KEY** \*category according to BS5837

- 000 (Green circle) \*CATEGORY A TREE + TREE REF.
- 000 (Blue circle) \*CATEGORY B TREE + TREE REF.
- 000 (Grey circle) \*CATEGORY C TREE + TREE REF.
- 000 (Red circle) \*CATEGORY U TREE + TREE REF.

G1 TREE GROUP REFERENCE  
 W1 WOODLAND GROUP + GROUP REFERENCE. HATCH EXTENT INDICATE APPROX EDGE OF CANOPIES OF PERIMETER TREES (COLOUR OF BOUNDARY LINE RELATES TO TREE \*CATEGORIES AS FOR INDIVIDUAL TREES AS SHOWN ABOVE)

- (Circle with dot) ROOT PROTECTION AREA TO FOLLOW
- (Red cross-hatch) WOODLAND GROUP TO BE REMOVED
- (Purple hatched) PROPOSED SCHEME
- (Red cross) TREE TO BE REMOVED OR TRANSLOCATED AS PART OF WORKS

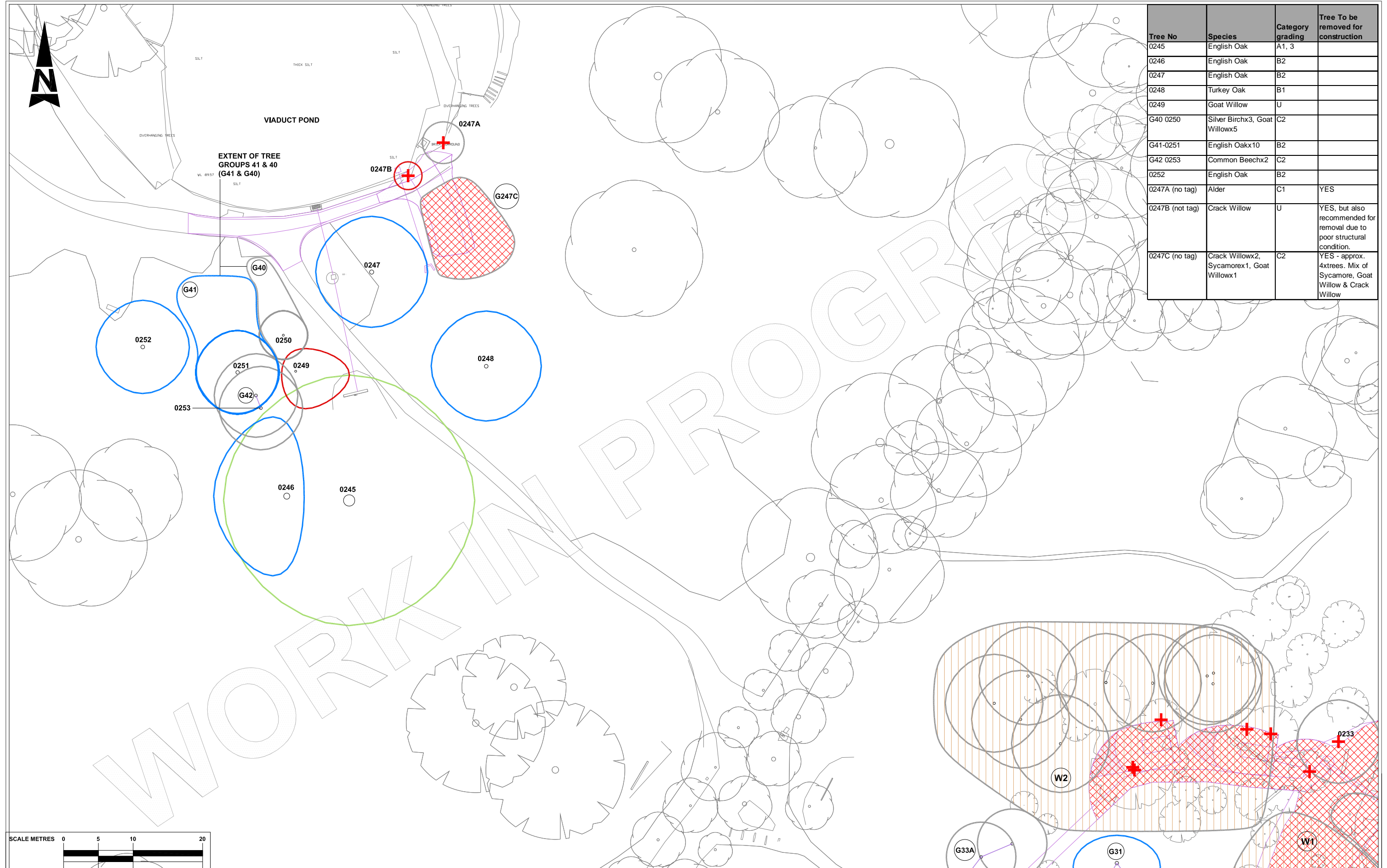
Stat	Purpose of Issue	Date	Auth	Rev	Description	By	Date	Chk'd	Auth
P	'WORK IN PROGRESS' ISSUE TO PPSG	14/05/14	P1		'WORK IN PROGRESS' ISSUE TO PPSG	NP	14/05/14	JH	TD

**ATKINS**  
 Atkins Limited  
 Landscape Architecture,  
 The Octagon,  
 27 Middleborough,  
 Colchester, Essex, England  
 Tel: (01206) 732000  
 Fax: (01206) 732020  
 www.atkinsglobal.com

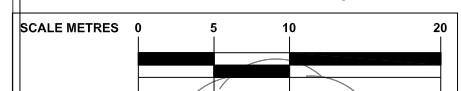
Client: City of London Corporation  
 Project: HAMPSTEAD HEATH PONDS PROJECT

Title: HIGHGATE NO.1 POND TREE PROTECTION DRAWINGS

Sheet Size: A1	Original Scale: 1:250@A1, 1:500@A3	Designed/Drawn: NP	Checked: JH	Authorised: TD
Status: P	Drawing Number: 5117039-ATK-P6-ZZ-DR-Y-2000	Date: 07.05.14	Date: 07.05.14	Date: 07.05.14
Rev: P1				



Tree No	Species	Category grading	Tree To be removed for construction
0245	English Oak	A1, 3	
0246	English Oak	B2	
0247	English Oak	B2	
0248	Turkey Oak	B1	
0249	Goat Willow	U	
G40 0250	Silver Birchx3, Goat Willowx5	C2	
G41-0251	English Oakx10	B2	
G42 0253	Common Beechx2	C2	
0252	English Oak	B2	
0247A (no tag)	Alder	C1	YES
0247B (not tag)	Crack Willow	U	YES, but also recommended for removal due to poor structural condition.
0247C (no tag)	Crack Willowx2, Sycamorex1, Goat Willowx1	C2	YES - approx. 4xtrees. Mix of Sycamore, Goat Willow & Crack Willow



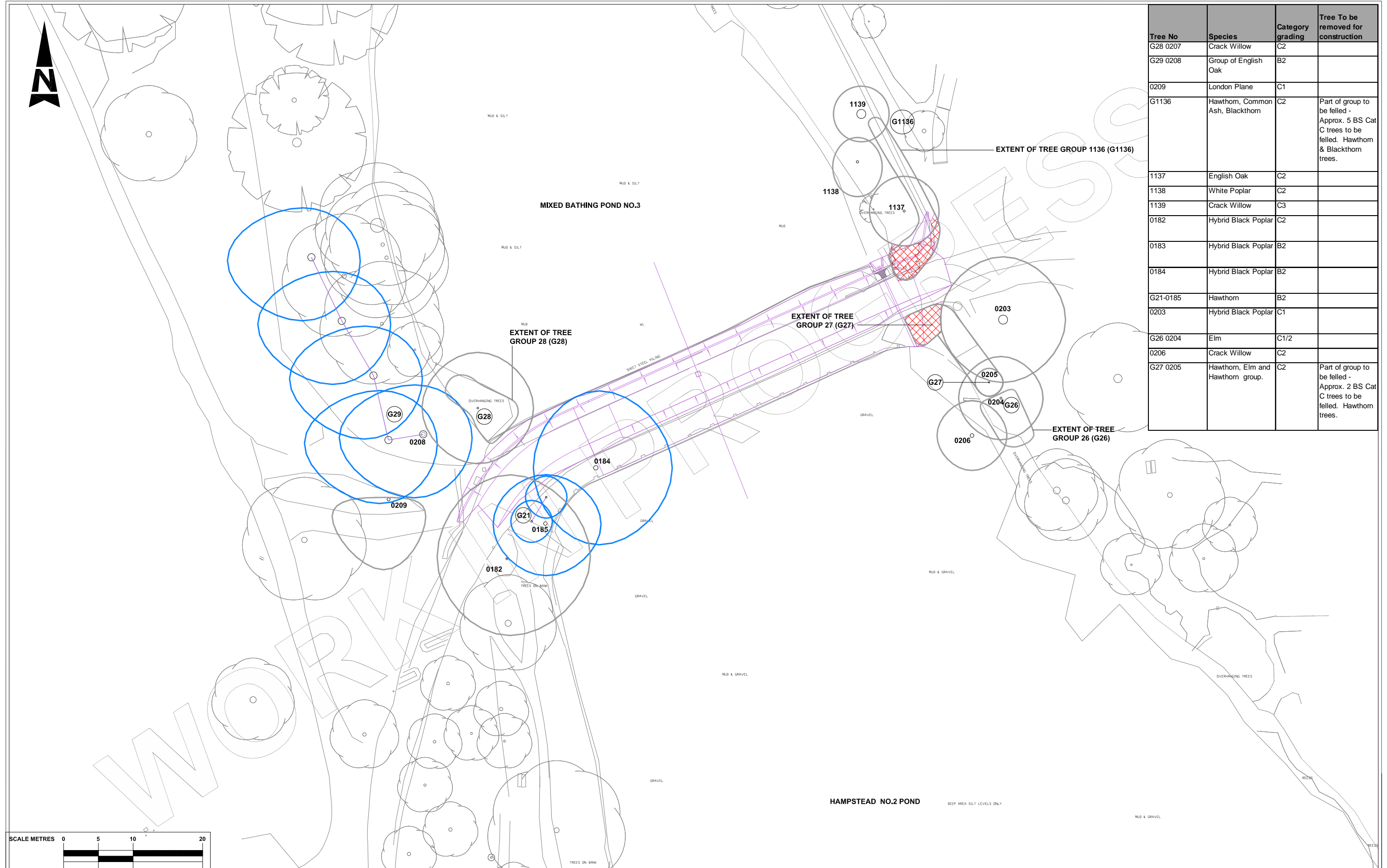
**TREE CONSTRAINTS KEY** \*category according to BS5837

- 000 (Green circle) \*CATEGORY A TREE + TREE REF.
- 000 (Blue circle) \*CATEGORY B TREE + TREE REF.
- 000 (Grey circle) \*CATEGORY C TREE + TREE REF.
- 000 (Red circle) \*CATEGORY U TREE + TREE REF.
- G1 (Circle with G) TREE GROUP REFERENCE
- W1 (Circle with W) WOODLAND GROUP + GROUP REFERENCE. HATCH EXTENT INDICATE APPROX EDGE OF CANOPIES OF PERIMETER TREES (COLOUR OF BOUNDARY LINE RELATES TO TREE \*CATEGORIES AS FOR INDIVIDUAL TREES AS SHOWN ABOVE)
- Circle with dot ROOT PROTECTION AREA TO FOLLOW
- Red cross (+) TREE TO BE REMOVED OR TRANSLOCATED AS PART OF WORKS
- Red hatched area WOODLAND GROUP TO BE REMOVED
- Purple hatched area PROPOSED SCHEME

Stat	Purpose of Issue	Date	Auth	Rev	Description	By	Date	Chk'd	Auth
P	'WORK IN PROGRESS' ISSUE TO PPSG	14/05/14	TD	P1	'WORK IN PROGRESS' ISSUE TO PPSG	NP	TBC	JH	TD

**ATKINS**  
**Atkins Limited**  
 Landscape Architecture,  
 The Octagon,  
 27 Middleborough,  
 Colchester, Essex, England  
 Tel: (01206) 732000  
 Fax: (01206) 732020  
 www.atkinglobal.com

Client	City of London Corporation		Title		VIADUCT POND TREE PROTECTION PLANS		
Project	HAMPSTEAD HEATH PONDS PROJECT		Sheet Size	Original Scale	Designed/Drawn	Checked	Authorised
			A1	1:250@A1 1:500@A3	NP	JH	TD
Status	Drawing Number		Date	Date	Date	Date	Rev
P	5117039-ATK-P7-ZZ-DR-Y-2000		07.05.14	07.05.14	07.05.14	07.05.14	P1



Tree No	Species	Category grading	Tree To be removed for construction
G28 0207	Crack Willow	C2	
G29 0208	Group of English Oak	B2	
0209	London Plane	C1	
G1136	Hawthorn, Common Ash, Blackthorn	C2	Part of group to be felled - Approx. 5 BS Cat C trees to be felled. Hawthorn & Blackthorn trees.
1137	English Oak	C2	
1138	White Poplar	C2	
1139	Crack Willow	C3	
0182	Hybrid Black Poplar	C2	
0183	Hybrid Black Poplar	B2	
0184	Hybrid Black Poplar	B2	
G21-0185	Hawthorn	B2	
0203	Hybrid Black Poplar	C1	
G26 0204	Elm	C1/2	
0206	Crack Willow	C2	
G27 0205	Hawthorn, Elm and Hawthorn group.	C2	Part of group to be felled - Approx. 2 BS Cat C trees to be felled. Hawthorn trees.

**TREE CONSTRAINTS KEY** \*category according to BS5837

- 000 (Green circle) \*CATEGORY A TREE + TREE REF.
- 000 (Blue circle) \*CATEGORY B TREE + TREE REF.
- 000 (Grey circle) \*CATEGORY C TREE + TREE REF.
- 000 (Red circle) \*CATEGORY U TREE + TREE REF.

(G1) TREE GROUP REFERENCE  
 (W1) WOODLAND GROUP + GROUP REFERENCE.  
 HATCH EXTENT INDICATE APPROX EDGE OF CANOPIES OF PERIMETER TREES (COLOUR OF BOUNDARY LINE RELATES TO TREE \*CATEGORIES AS FOR INDIVIDUAL TREES AS SHOWN ABOVE)

- (Circle with dot) ROOT PROTECTION AREA TO FOLLOW
- (Red cross-hatch) WOODLAND GROUP TO BE REMOVED
- (Purple cross-hatch) PROPOSED SCHEME
- (Red cross) TREE TO BE REMOVED OR TRANSLOCATED AS PART OF WORKS

Stat	Purpose of Issue	Date	Auth	Rev	Description	By	Date	Chk'd	Auth
P	'WORK IN PROGRESS' ISSUE TO PPSG	14/05/14	TD	P1	'WORK IN PROGRESS' ISSUE TO PPSG	NP	14/05/14	JH	TD

**ATKINS**<sup>TM</sup>

**Atkins Limited**  
 Landscape Architecture,  
 The Octagon,  
 27 Middleborough,  
 Colchester, Essex, England  
 CO1 1TG

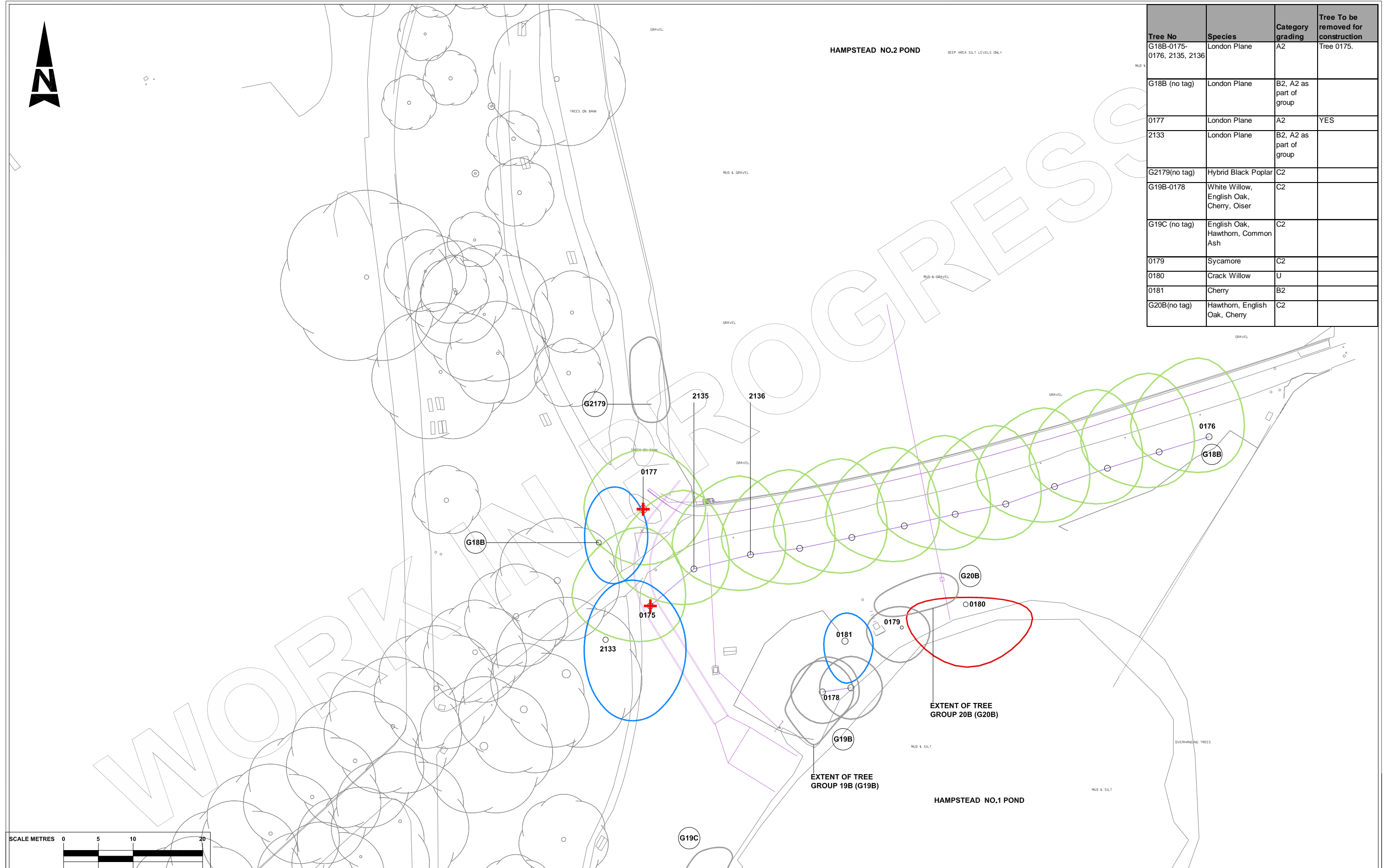
Tel: (01206) 732000  
 Fax: (01206) 732020  
 www.atkinsglobal.com

Client: City of London Corporation

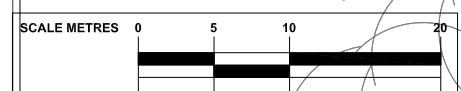
Project: HAMPSTEAD HEATH PONDS PROJECT

Title: MIXED BATHING POND TREE PROTECTION PLANS

Sheet Size: A1	Original Scale: 1:250@A1, 1:500@A3	Designed/Drawn: NP	Checked: JH	Authorised: TD
Status: P	Drawing Number: 5117039-ATK-P8-ZZ-DR-Y-2000	Date: 07.05.14	Date: 07.05.14	Date: 07.05.14
Rev: P1				



Tree No	Species	Category grading	Tree To be removed for construction
G18B-0175-0176, 2135, 2136	London Plane	A2	Tree 0175.
G18B (no tag)	London Plane	B2, A2 as part of group	
0177	London Plane	A2	YES
2133	London Plane	B2, A2 as part of group	
G2179(no tag)	Hybrid Black Poplar	C2	
G19B-0178	White Willow, English Oak, Cherry, Oiser	C2	
G19C (no tag)	English Oak, Hawthorn, Common Ash	C2	
0179	Sycamore	C2	
0180	Crack Willow	U	
0181	Cherry	B2	
G20B(no tag)	Hawthorn, English Oak, Cherry	C2	



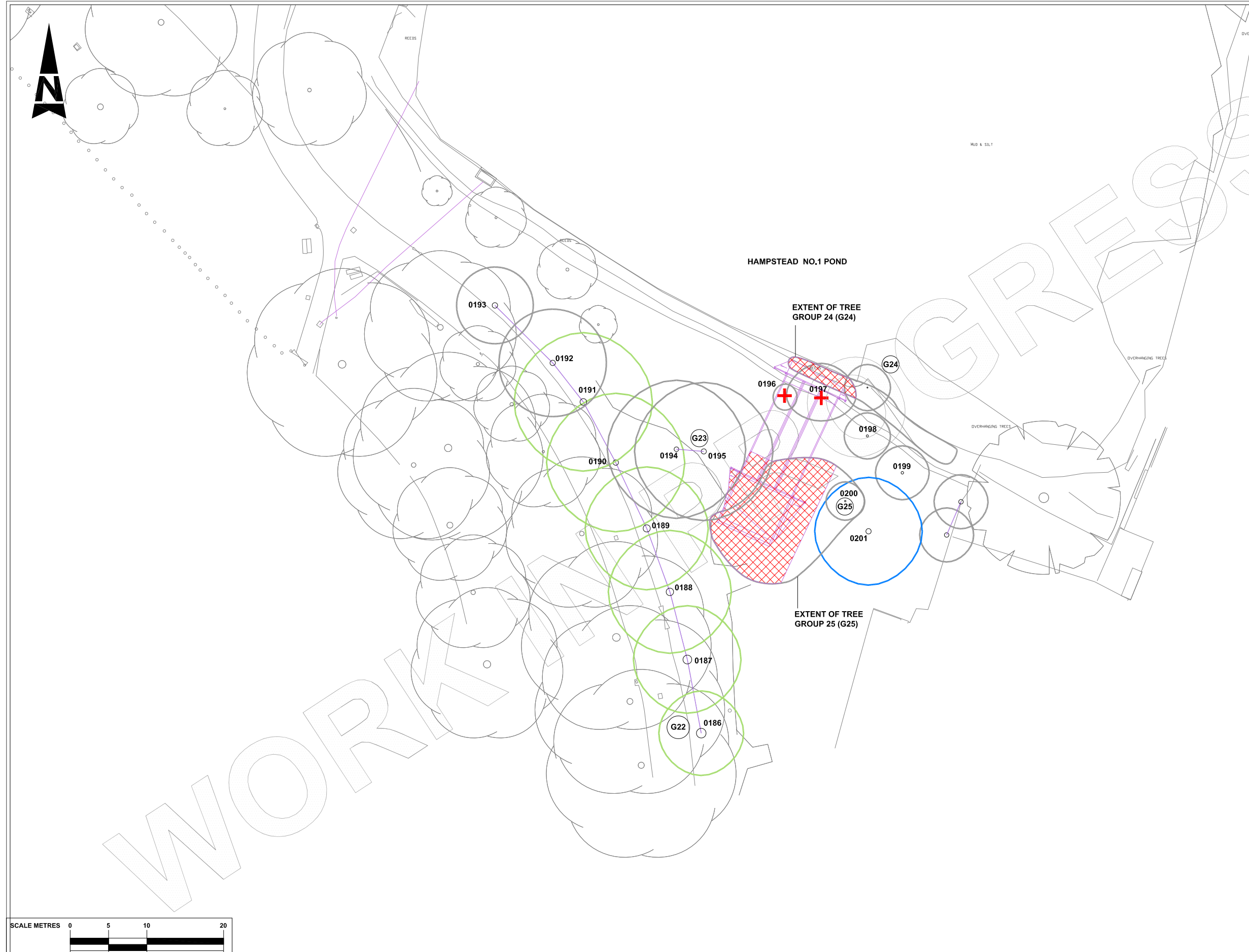
TREE CONSTRAINTS KEY		*category according to BS5837	
000	*CATEGORY A TREE + TREE REF.	G1	TREE GROUP REFERENCE
000	*CATEGORY B TREE + TREE REF.	W1	WOODLAND GROUP + GROUP REFERENCE
000	*CATEGORY C TREE + TREE REF.		HATCH EXTENT INDICATE APPROX EDGE OF CANOPIES OF PERIMETER TREES (COLOUR OF BOUNDARY LINE RELATES TO TREE *CATEGORIES AS FOR INDIVIDUAL TREES AS SHOWN ABOVE)
000	*CATEGORY U TREE + TREE REF.		
			ROOT PROTECTION AREA TO FOLLOW
			WOODLAND GROUP TO BE REMOVED
			PROPOSED SCHEME
			TREE TO BE REMOVED OR TRANSLOCATED AS PART OF WORKS

Stat	Purpose of Issue	Date	Auth	Rev	Description	By	Date	Chk'd	Auth
P	'WORK IN PROGRESS' ISSUE TO PPSP	14/05/14	TD	A	'WORK IN PROGRESS' ISSUE TO PPSP	NP	TBC	JH	TD

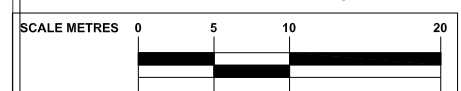
**ATKINS**  
 Atkins Limited  
 Landscape Architecture,  
 The Octagon,  
 27 Middleborough,  
 Colchester, Essex, England  
 Tel: (01206) 732000  
 Fax: (01206) 732020  
 www.atkinglobal.com

Client	City of London Corporation
Project	HAMPSTEAD HEATH PONDS PROJECT

Title		HAMPSTEAD NO.2 POND TREE PROTECTION PLANS			
Sheet Size	Original Scale	Designed/Drawn	Checked	Authorised	
A1	1:250@A1 1:500@A3	NP	JH	TD	
Status	Drawing Number	Date	Date	Date	Rev
P	5117039-ATK-P9-ZZ-DR-Y-2000	07.05.14	07.05.14	07.05.14	P1



Tree No	Species	Category grading	Tree To be removed for construction
G22-0186	London Plane	A2	
G22-0187	London Plane	A2	
G22-0188	London Plane	A2	
G22-0189	London Plane	A2	
G22-0190	London Plane	A2	
G22-0191	London Plane	A2	
G22-0192	London Plane	C2	
G22-0193	London Plane	C2	
G23 0194 0195	Common Ash	C2	
0196	Common Ash	U3	YES
0197	Cherry	C2	YES
0198	Hawthorn	C2	
0199	Hawthorn	C2	
G24 0202	Cherry, Hawthorn, Silver Birch, Common Ash	C2	Part of group to be felled - Approx. 1 BS Cat C Hawthorn to be felled
G25 0200	Hawthorn, Cherry and Sycamore group.	C2	Part of group to be felled - Approx. 3 BS Cat C trees to be felled. Mix of Hawthorn and Cherry
0201	Sycamore	B2	



**TREE CONSTRAINTS KEY** \*category according to BS5837

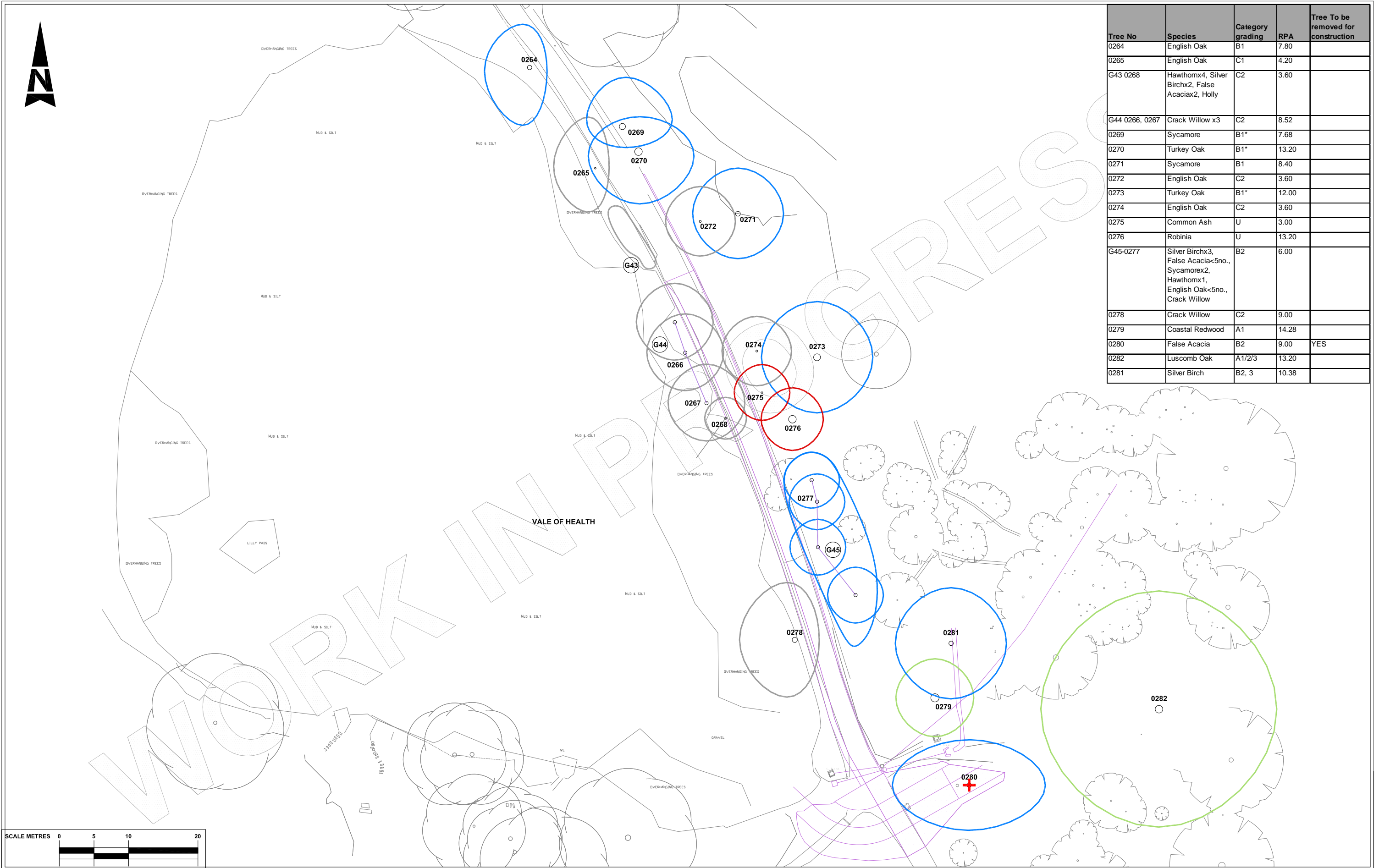
- 000 (Green circle) \*CATEGORY A TREE + TREE REF.
- 000 (Blue circle) \*CATEGORY B TREE + TREE REF.
- 000 (Grey circle) \*CATEGORY C TREE + TREE REF.
- 000 (Red circle) \*CATEGORY U TREE + TREE REF.
- G1 (Green circle) TREE GROUP REFERENCE
- WOODLAND GROUP + GROUP REFERENCE. HATCH EXTENT INDICATE APPROX EDGE OF CANOPIES OF PERIMETER TREES (COLOUR OF BOUNDARY LINE RELATES TO TREE \*CATEGORIES AS FOR INDIVIDUAL TREES AS SHOWN ABOVE)
- ROOT PROTECTION AREA TO FOLLOW
- WOODLAND GROUP TO BE REMOVED
- PROPOSED SCHEME
- TREE TO BE REMOVED OR TRANSLOCATED AS PART OF WORKS

Stat	Purpose of Issue	Date	Auth	Rev	Description	By	Date	Chk'd	Auth
P	'WORK IN PROGRESS' ISSUE TO PPSG	14/05/14	TD	A	'WORK IN PROGRESS' ISSUE TO PPSG	NP	14/05/14	JH	TD

**ATKINS**  
**Atkins Limited**  
 Landscape Architecture,  
 The Octagon,  
 27 Middleborough,  
 Colchester, Essex, England  
 CO1 1TG  
 Tel: (01206) 732000  
 Fax: (01206) 732020  
 www.atkinglobal.com

Client: City of London Corporation  
 Project: HAMPSTEAD HEATH PONDS PROJECT

Sheet Size	Original Scale	Designed/Drawn	Checked	Authorised
A1	1:250@A1 1:500@A3	NP	JH	TD
Status	Drawing Number	Date	Date	Date
P	5117039-ATK-P10-ZZ-DR-Y-2000	07.05.14	07.05.14	07.05.14
Rev				
				P1



Tree No	Species	Category grading	RPA	Tree To be removed for construction
0264	English Oak	B1	7.80	
0265	English Oak	C1	4.20	
G43 0268	Hawthornx4, Silver Birchx2, False Acaciax2, Holly	C2	3.60	
G44 0266, 0267	Crack Willow x3	C2	8.52	
0269	Sycamore	B1*	7.68	
0270	Turkey Oak	B1*	13.20	
0271	Sycamore	B1	8.40	
0272	English Oak	C2	3.60	
0273	Turkey Oak	B1*	12.00	
0274	English Oak	C2	3.60	
0275	Common Ash	U	3.00	
0276	Robinia	U	13.20	
G45-0277	Silver Birchx3, False Acacia<5no., Sycamorex2, Hawthornx1, English Oak<5no., Crack Willow	B2	6.00	
0278	Crack Willow	C2	9.00	
0279	Coastal Redwood	A1	14.28	
0280	False Acacia	B2	9.00	YES
0282	Luscomb Oak	A1/2/3	13.20	
0281	Silver Birch	B2, 3	10.38	



**TREE CONSTRAINTS KEY** \*category according to BS5837

- 000 (Green circle) \*CATEGORY A TREE + TREE REF.
- 000 (Blue circle) \*CATEGORY B TREE + TREE REF.
- 000 (Grey circle) \*CATEGORY C TREE + TREE REF.
- 000 (Red circle) \*CATEGORY U TREE + TREE REF.

(G1) TREE GROUP REFERENCE  
 (W1) WOODLAND GROUP + GROUP REFERENCE. HATCH EXTENT INDICATE APPROX EDGE OF CANOPIES OF PERIMETER TREES (COLOUR OF BOUNDARY LINE RELATES TO TREE \*CATEGORIES AS FOR INDIVIDUAL TREES AS SHOWN ABOVE)

- (Circle with dot) ROOT PROTECTION AREA TO FOLLOW
- (Red cross-hatch) WOODLAND GROUP TO BE REMOVED
- (Purple cross-hatch) PROPOSED SCHEME
- (Red cross) TREE TO BE REMOVED OR TRANSLOCATED AS PART OF WORKS

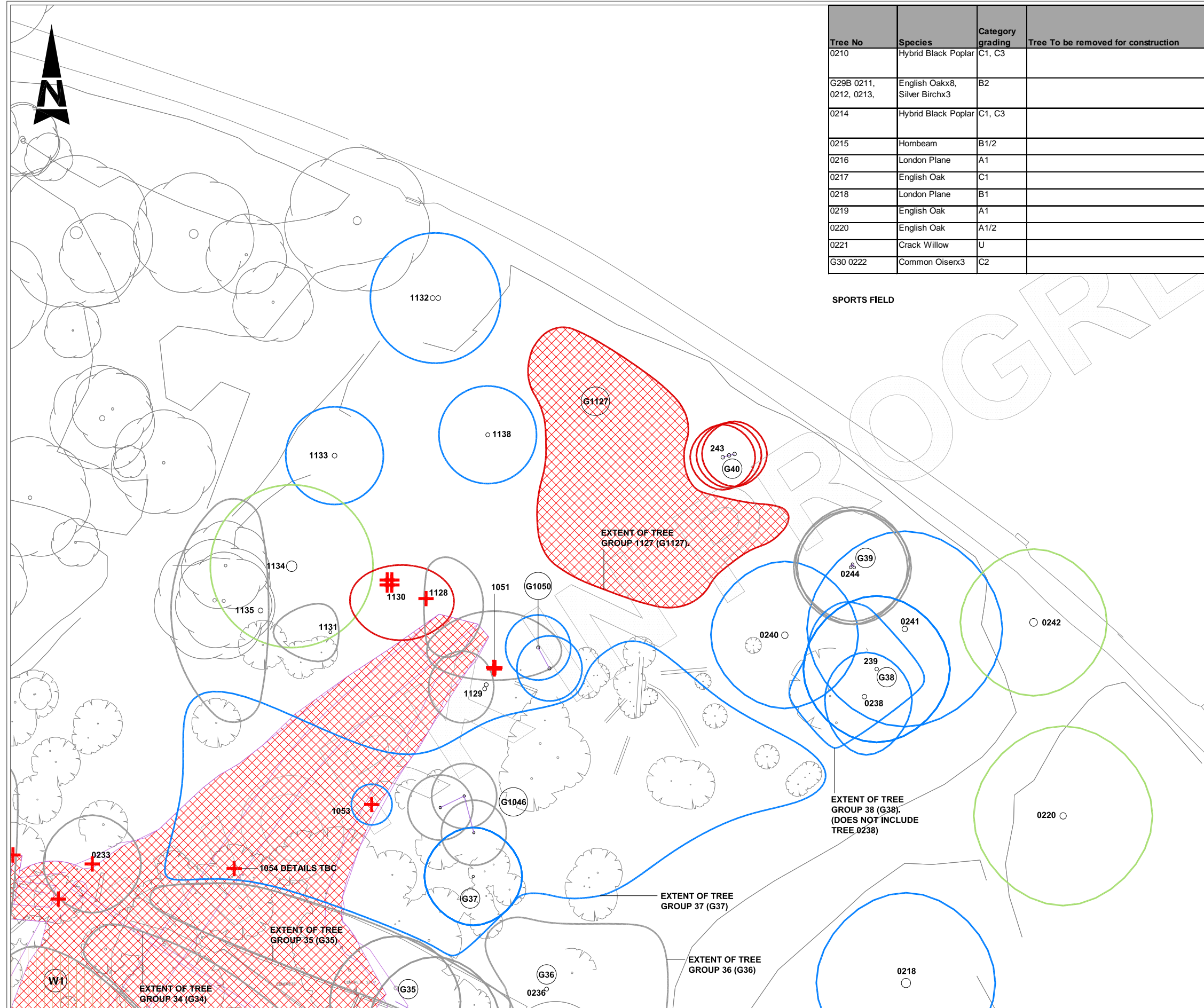
Stat	Purpose of Issue	Date	Auth	Rev	Description	By	Date	Chk'd	Auth
P	'WORK IN PROGRESS' ISSUE TO PPSG	14/05/14	P1		'WORK IN PROGRESS' ISSUE TO PPSG	NP	14/05/14	JH	TD

**ATKINS**  
 Atkins Limited  
 Landscape Architecture,  
 The Octagon,  
 27 Middleborough,  
 Colchester, Essex, England  
 Tel: (01206) 732000  
 Fax: (01206) 732020  
 www.atkinglobal.com

Client: City of London Corporation  
 Project: HAMPSTEAD HEATH PONDS PROJECT

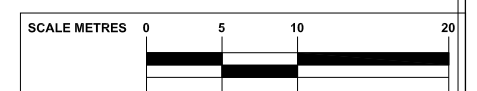
Title: VALE OF HEALTH POND TREE PROTECTION PLANS

Sheet Size: A1	Original Scale: 1:250@A1, 1:500@A3	Designed/Drawn: NP	Checked: JH	Authorised: TD
Status: P	Drawing Number: 5117039-ATK-P11-ZZ-DR-Y-2000	Date: 07.05.14	Date: 07.05.14	Date: 07.05.14
Rev: P1				



Tree No	Species	Category grading	Tree To be removed for construction
0210	Hybrid Black Poplar	C1, C3	
G29B 0211, 0212, 0213,	English Oakx8, Silver Birchx3	B2	
0214	Hybrid Black Poplar	C1, C3	
0215	Hornbeam	B1/2	
0216	London Plane	A1	
0217	English Oak	C1	
0218	London Plane	B1	
0219	English Oak	A1	
0220	English Oak	A1/2	
0221	Crack Willow	U	
G30 0222	Common Oiserx3	C2	

Tree No	Species	Category grading	Tree To be removed for construction
0223	English Oak	B1	
0224	English Oak	C1	
0225	English Oak	C2	
0226	English Oak	C1	
0227	Turkey Oak	B2	
0228	English Oak	B1	
0229	Silver Birch	B2	
G31-0230	English Oak	B2	
G32-0231	English Oak	B2	
G33 0232	English Oak	B2	
W1	Mixed	C2	Part of W1 to be felled - Approx. 18 BS Cat C trees to be felled. Mix of Hawthorn, Sycamore & Silver Birch
W2	Wet Woodland, Mixed Willow, Ash, Sycamore, Hawthorn	C2	Part of W2 to be felled - Approx. 11 BS Cat C trees to be felled. Mix of Hawthorn & Willow species.
0233	Common Ash	C1	YES
G34-0234	Lime, Common Ash, Crack Willow, Sycamore, Hawthorn	C2	Part of G34 to be felled - Approx. 11 BS Cat C trees to be felled. Mix of Holly, Hawthorn, Common Ash
G35 0235	Mixed Group, Crack Willow, Small leaved Lime, Holly, False Acacia, Hawthorn	C2	Part of G35 to be felled - Approx. 5 BS Cat C trees to be felled. Mix of Holly, Crack Willow, Hawthorn, Small Leaved Lime
G36-0236	Crack Willow, Elm, Hawthorn	C2	
G37 0237, 1053	Mixed group. Hawthorn, Elder	B2	Part of G37 to be felled - Approx. 12 BS Cat B trees to be felled. Mix of Hawthorn & Elder.
G38 0239	English Oak	B2	
0238	English Oak	B1	
0240	Common Ash	B1	
0241	English Oak	B2	
0242	Norway Maple	A1	
G40-0243	Crack Willowx7	U	
G39 0244	Elm, Common Ash	C2	
G1127	Crack Willow	U	Part of G1127 to be cleared to facilitate construction access. Approx. 10 BS Cat U trees.
1128	Crack Willow	C2	YES
1129	Common Ash	C2	YES
1130	Crack Willow	U	
1131	Common Ash	B2	
1132	English Oak	B2	
1133	English Oak	B2	
1134	London Plane	A1	
1135	Common Beech	C2	
G1046	Sycamore	C2	
G1050	Common Ash x2	B2	
1051	Hawthorn	C2	YES
1053	Goat Willow	C2	
1138	English Oak	B2	
0210A (no tag)	Sycamore	C2	
G33A (no tag)	Goat Willowx3, White Willowx1, Limesx2, Silver Birchx 1	C2	



**TREE CONSTRAINTS KEY**

- 000 (Green circle) \*CATEGORY A TREE + TREE REF.
- 000 (Blue circle) \*CATEGORY B TREE + TREE REF.
- 000 (Grey circle) \*CATEGORY C TREE + TREE REF.
- 000 (Red circle) \*CATEGORY U TREE + TREE REF.
- G1 (Green circle) TREE GROUP REFERENCE
- W1 (Green circle) WOODLAND GROUP + GROUP REFERENCE. HATCH EXTENT INDICATE APPROX EDGE OF CANOPIES OF PERIMETER TREES (COLOUR OF BOUNDARY LINE RELATES TO TREE \*CATEGORIES AS FOR INDIVIDUAL TREES AS SHOWN ABOVE)
- Root Protection Area to Follow (Circle with dot)
- Woodland Group to be Removed (Red hatched area)
- Proposed Scheme (Purple hatched area)
- Tree to be removed or translocated as part of works (Red cross)

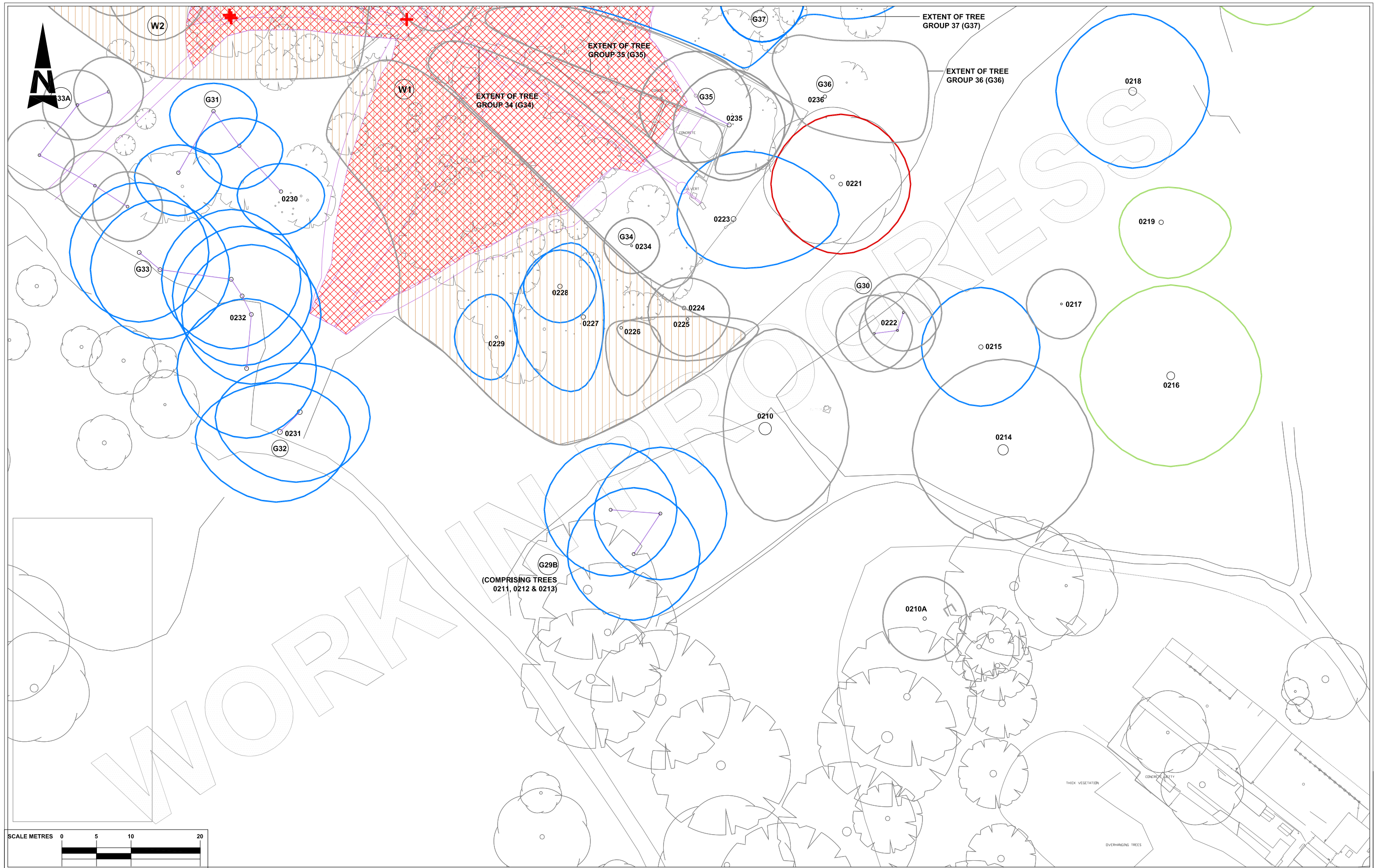
Stat	Purpose of Issue	Date	Auth	Rev	Description	By	Date	Chk'd	Auth
P	'WORK IN PROGRESS' ISSUE TO PPSG	14/05/14	TD	P1	'WORK IN PROGRESS' ISSUE TO PPSG	NP	14/05/14	JH	TD

**ATKINS**  
 Atkins Limited  
 Landscape Architecture,  
 The Octagon,  
 27 Middleborough,  
 Colchester, Essex, England  
 Tel: (01206) 732000  
 Fax: (01206) 732020  
 www.atkinsglobal.com

Client: City of London Corporation  
 Project: HAMPSTEAD HEATH PONDS PROJECT

Title: CATCH PIT TREE PROTECTION PLANS  
 Sheet Size: A1  
 Original Scale: 1:250@A1, 1:500@A3  
 Designed/Drawn: NP  
 Checked: JH  
 Authorised: TD  
 Date: 07.05.14  
 Drawing Number: 5117039-ATK-P12-ZZ-DR-Y-2000  
 Rev: P1





**TREE CONSTRAINTS KEY** \*category according to BS5837

000	*CATEGORY A TREE + TREE REF.	G1	TREE GROUP REFERENCE	○	ROOT PROTECTION AREA TO FOLLOW
000	*CATEGORY B TREE + TREE REF.	W1	WOODLAND GROUP + GROUP REFERENCE. HATCH EXTENT INDICATE APPROX EDGE OF CANOPIES OF PERIMETER TREES (COLOUR OF BOUNDARY LINE RELATES TO TREE *CATEGORIES AS FOR INDIVIDUAL TREES AS SHOWN ABOVE)	⊗	WOODLAND GROUP TO BE REMOVED
000	*CATEGORY C TREE + TREE REF.			▨	PROPOSED SCHEME
000	*CATEGORY U TREE + TREE REF.			+	TREE TO BE REMOVED OR TRANSLOCATED AS PART OF WORKS

Stat	Purpose of Issue	Date	Auth	Rev	Description	By	Date	Chk'd	Auth
P	'WORK IN PROGRESS' ISSUE TO PPSG	14/05/14	TD	P1	'WORK IN PROGRESS' ISSUE TO PPSG	NP	14/05/14	JH	TD

**ATKINS**  
 Atkins Limited  
 Landscape Architecture,  
 The Octagon,  
 27 Middleborough,  
 Colchester, Essex, England  
 C01 1TG

Tel: (01206) 732000  
 Fax: (01206) 732020  
 www.atkinglobal.com

Client	City of London Corporation
Project	HAMPSTEAD HEATH PONDS PROJECT

Title CATCH PIT TREE PROTECTION PLANS				
Sheet Size <b>A1</b>	Original Scale 1:250	Designed/Drawn NP	Checked JH	Authorised TD
Status P	Drawing Number 5117039-ATK-P12-ZZ-DR-Y-2001	Date 07.05.14	Date 07.05.14	Date 07.05.14
Rev P1				